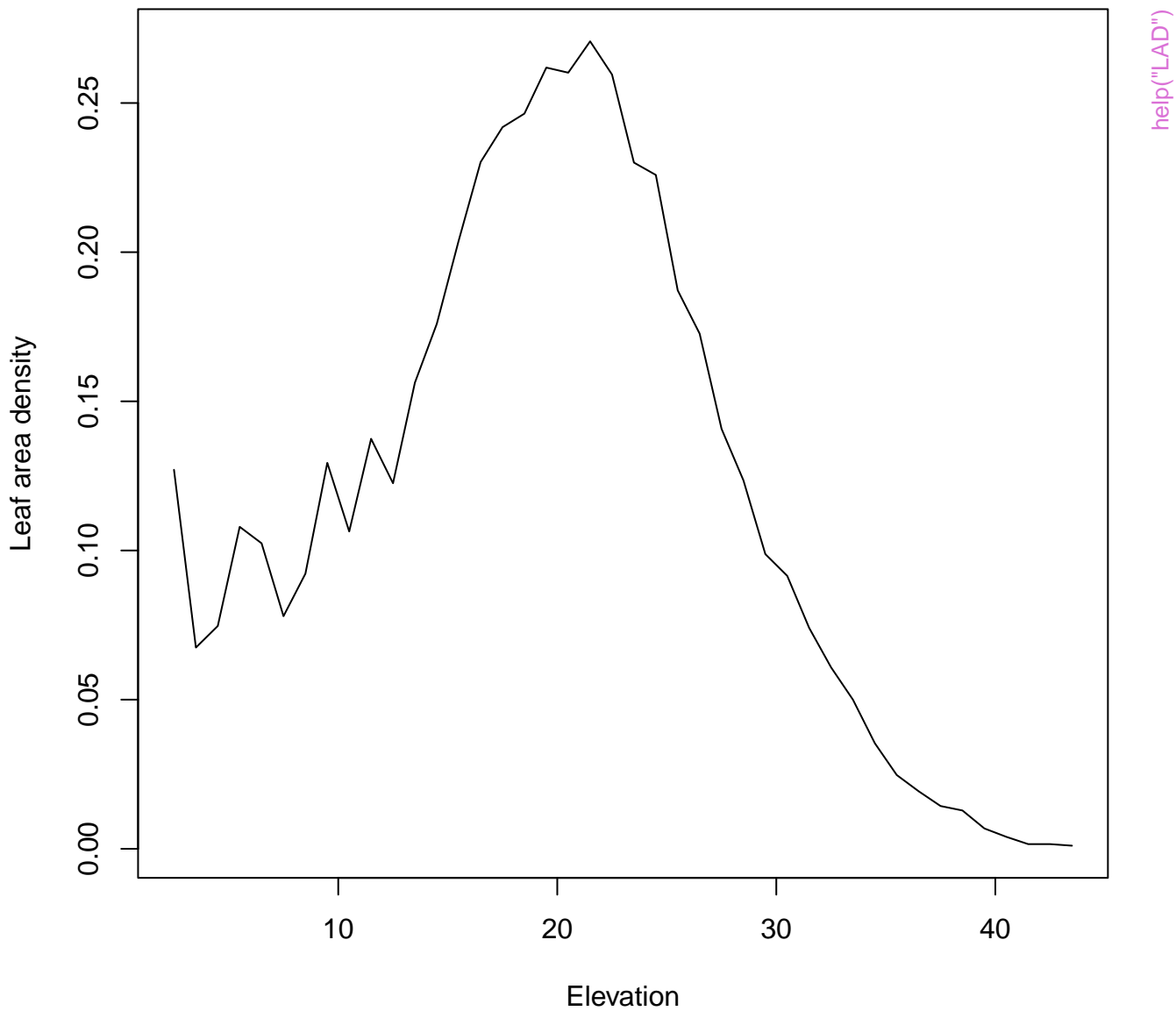
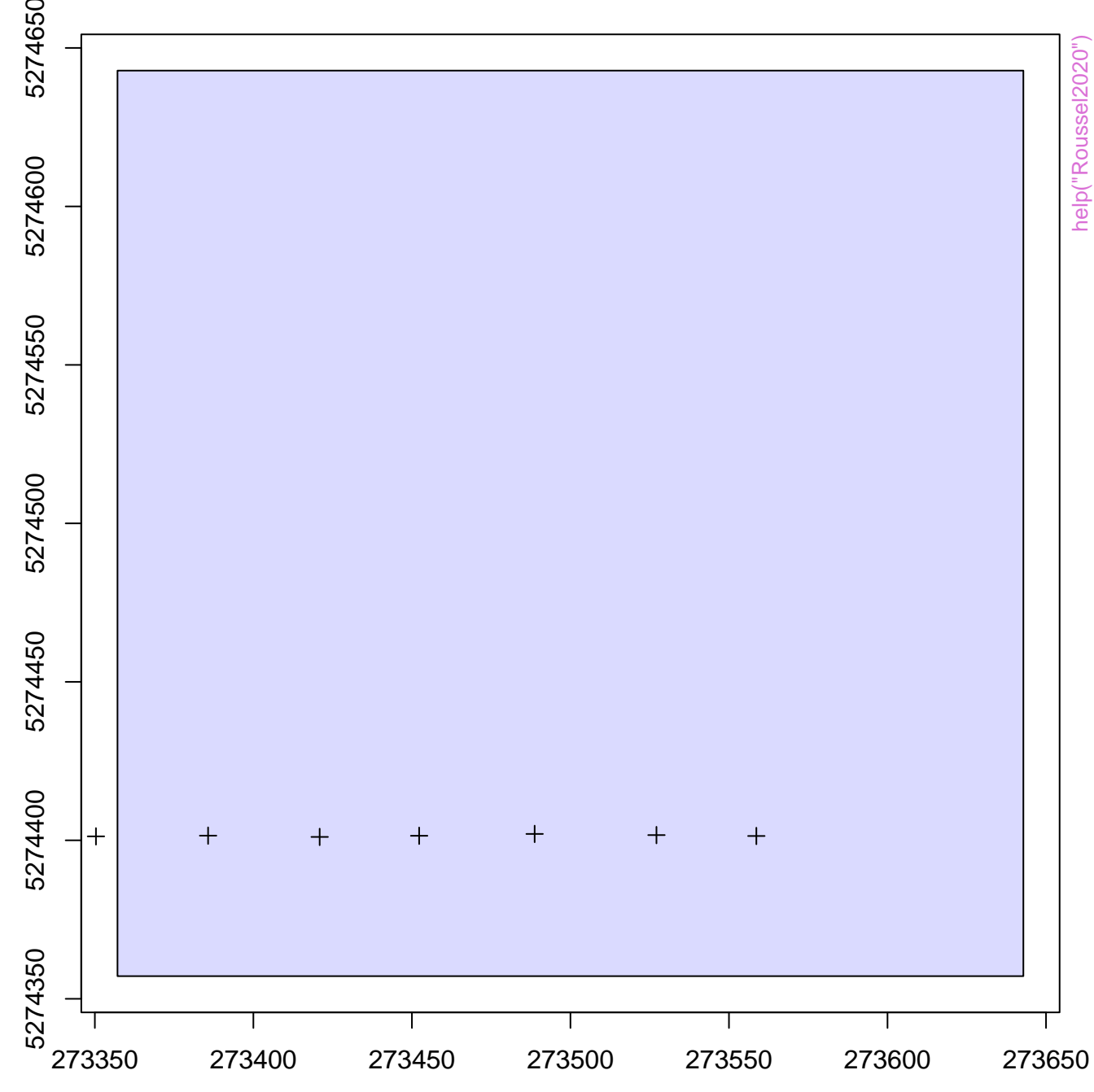
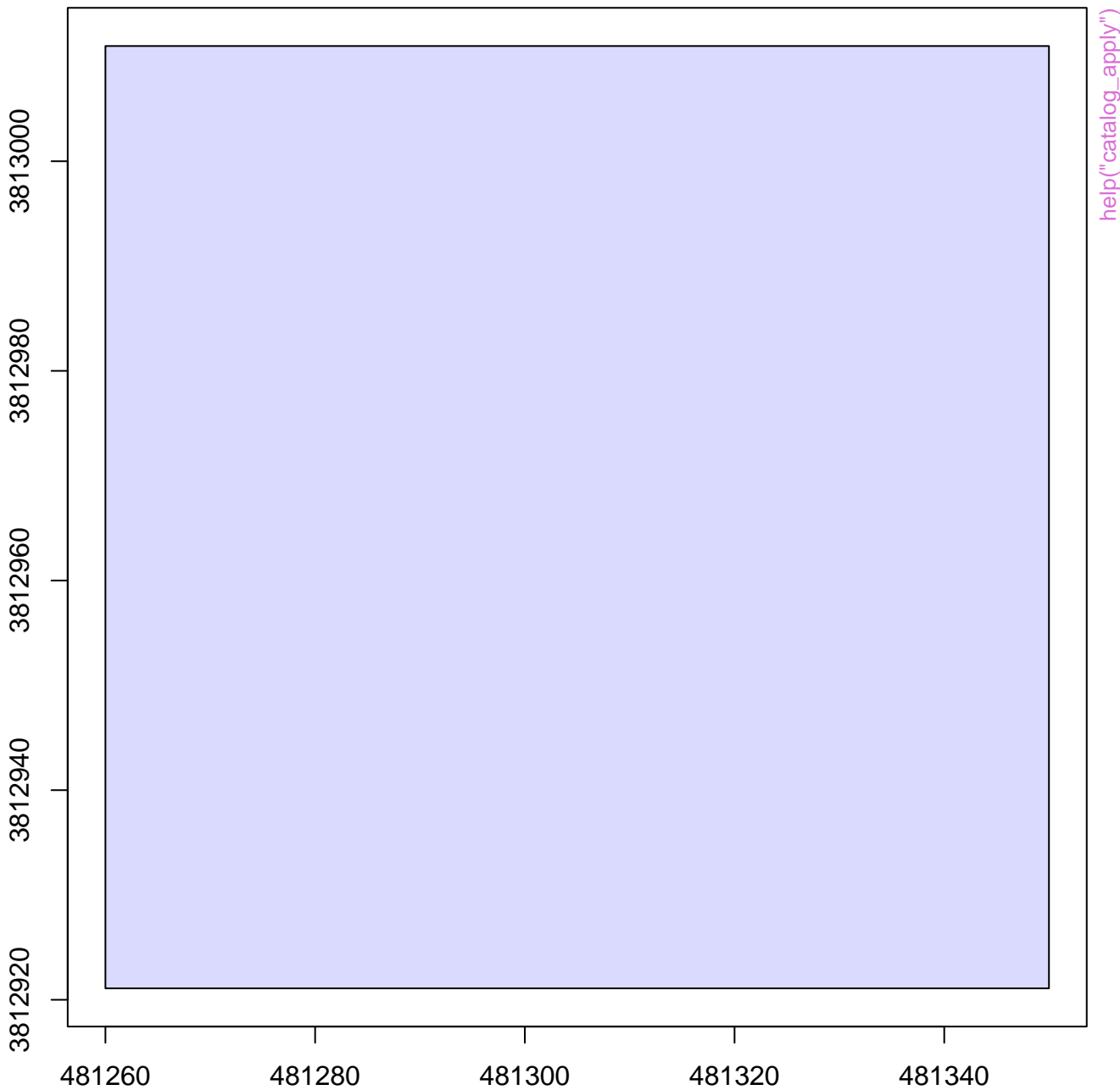


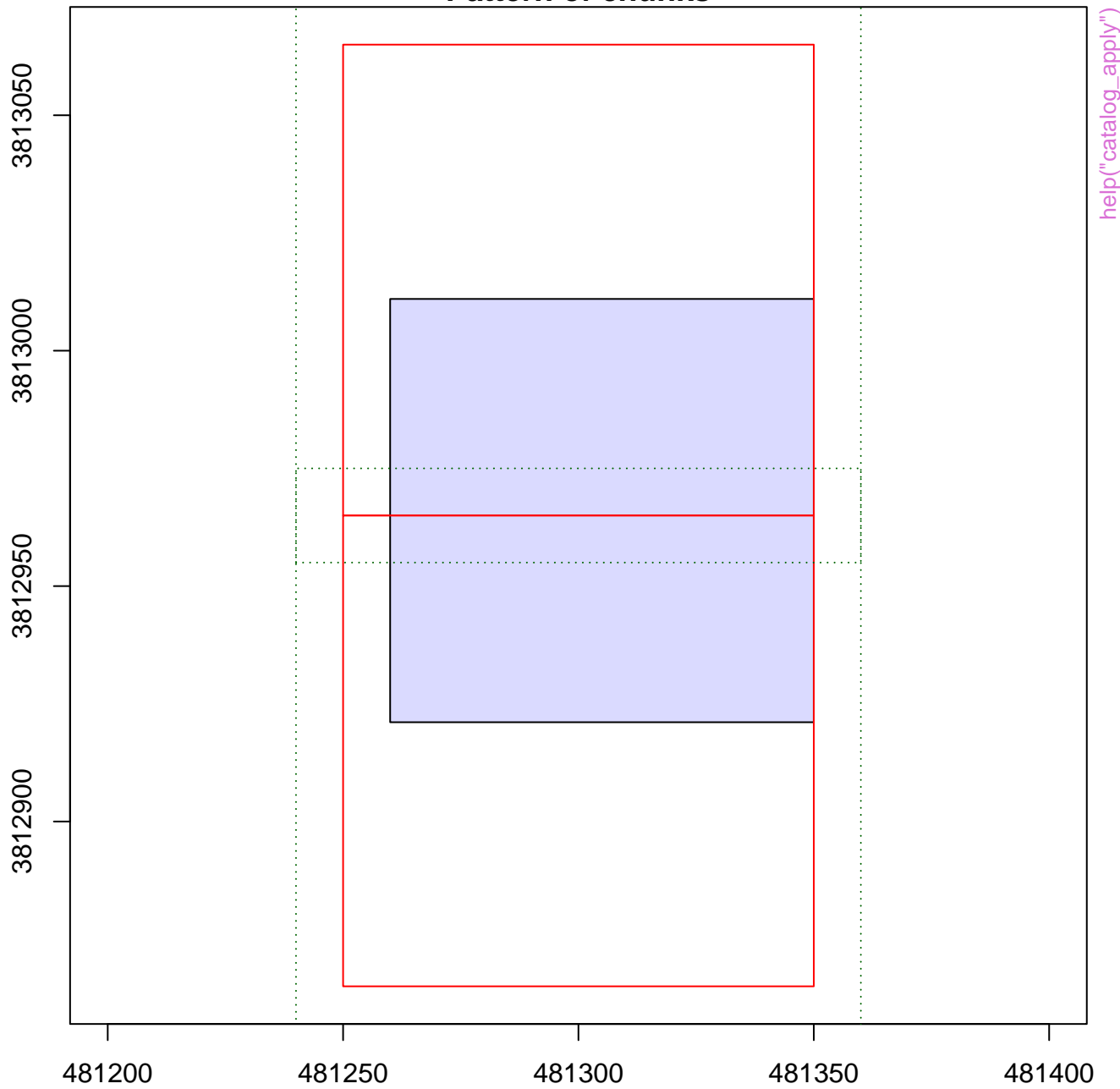
help("Gatzliolis2019")

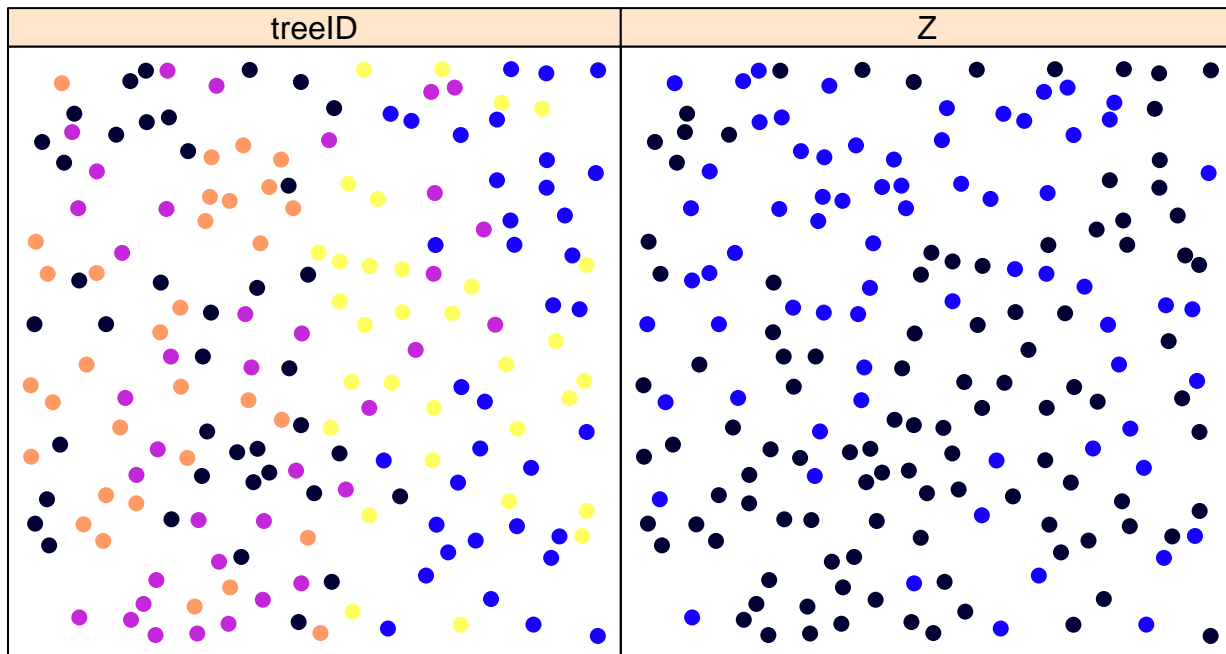






Pattern of chunks

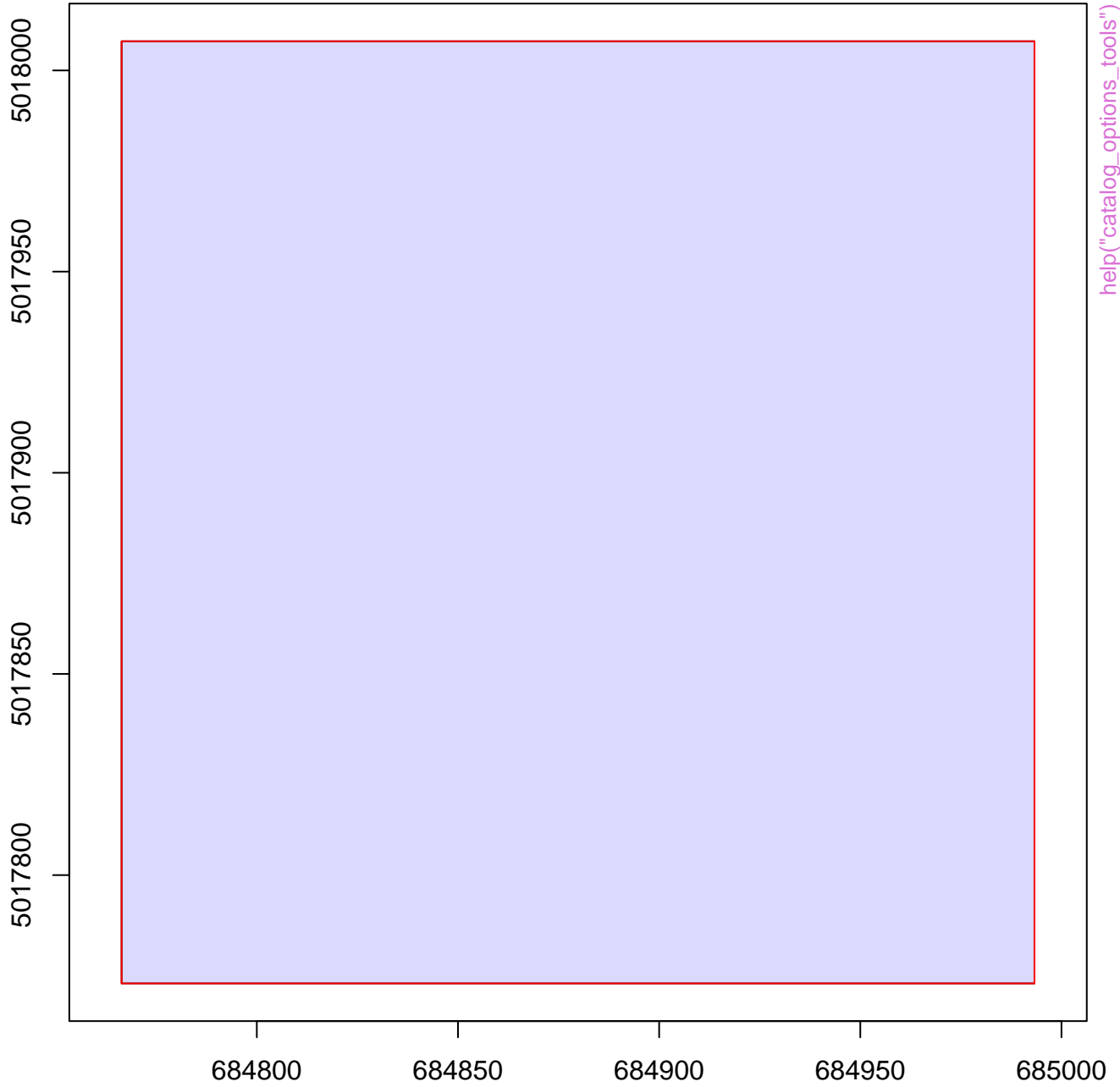




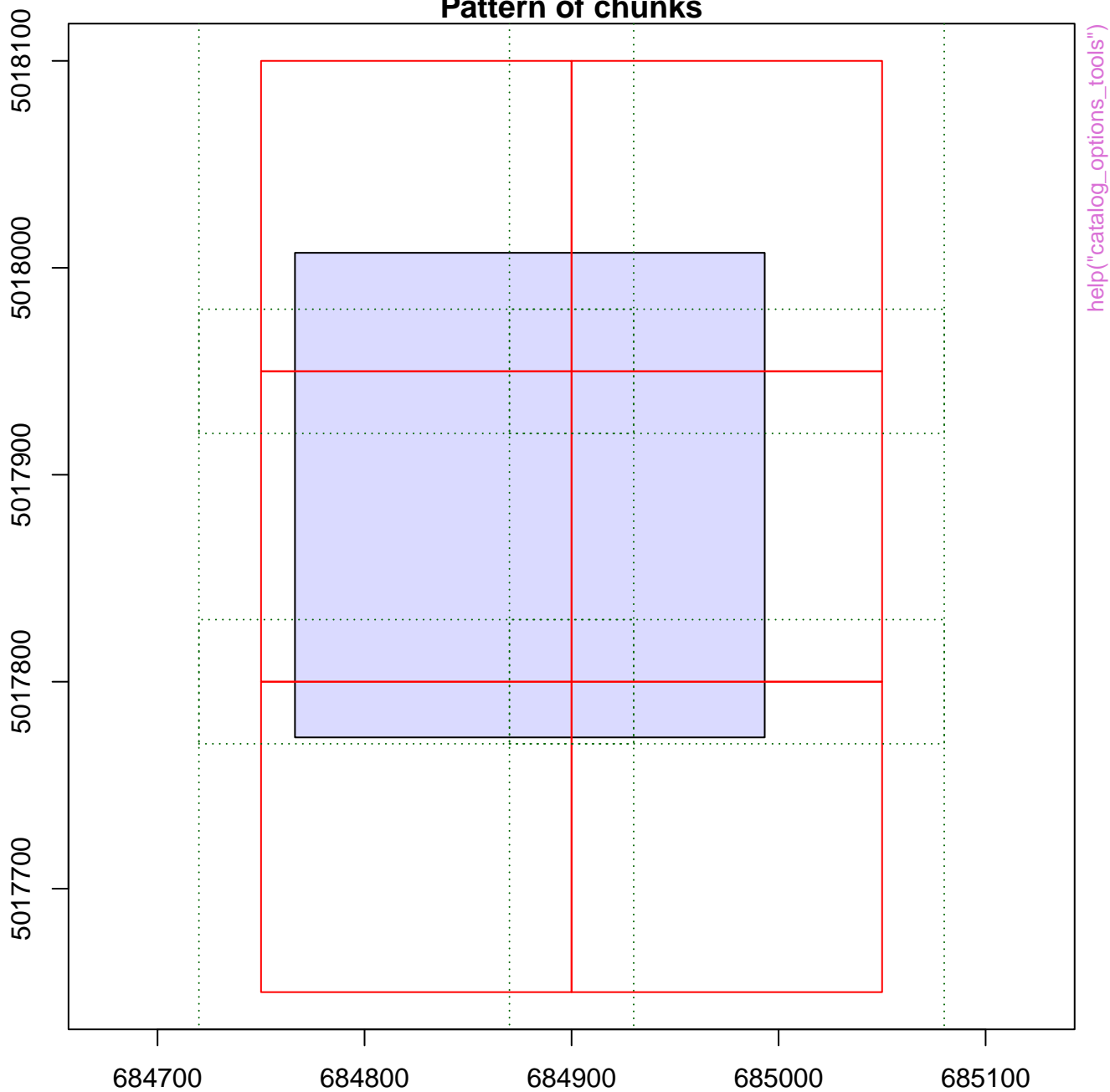
● [1,23.2]  
● (23.2,45.4]  
● (45.4,67.6]  
● (67.6,89.8]  
● (89.8,112]

help("catalog\_apply")

## Pattern of chunks

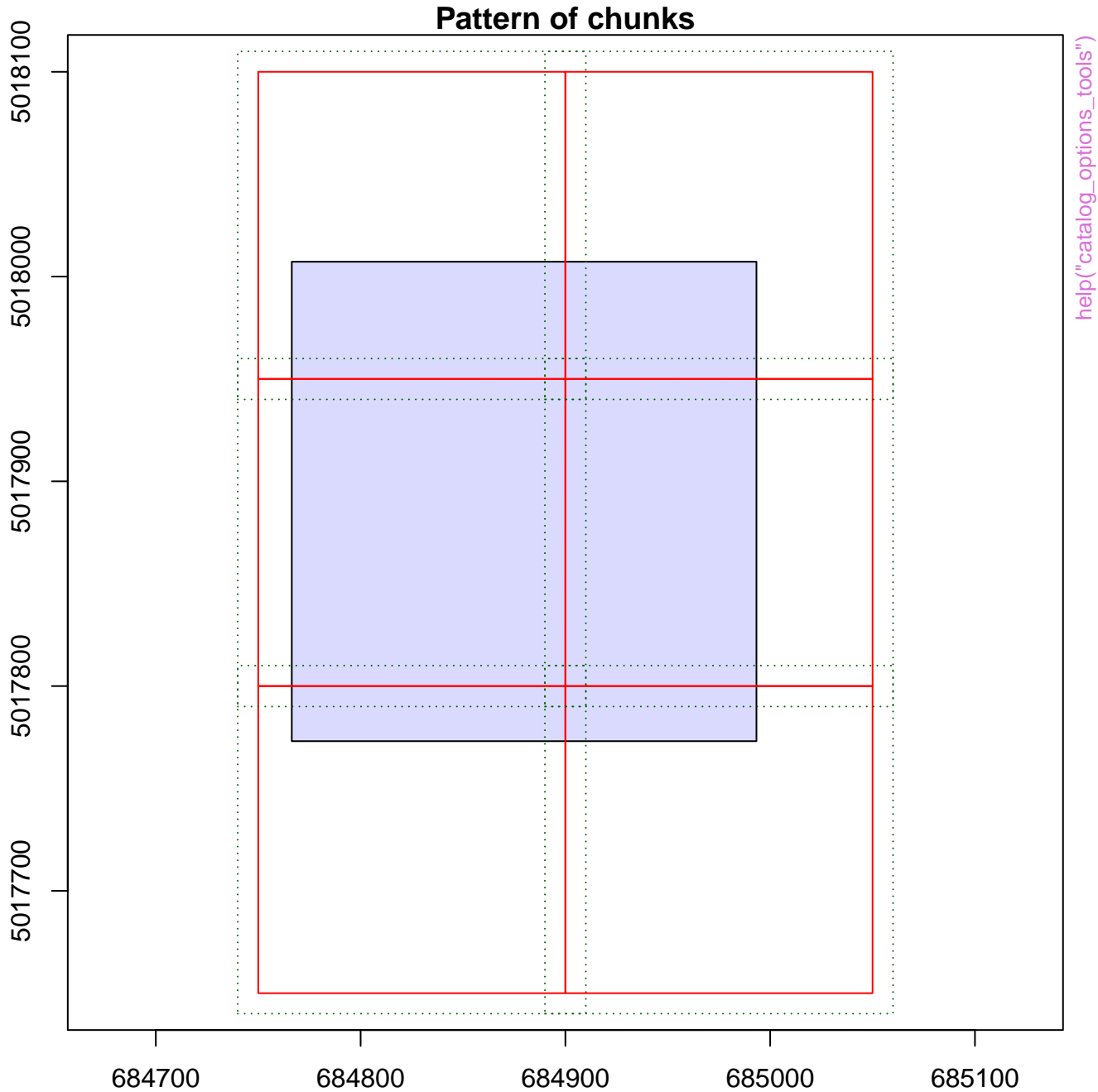


# Pattern of chunks

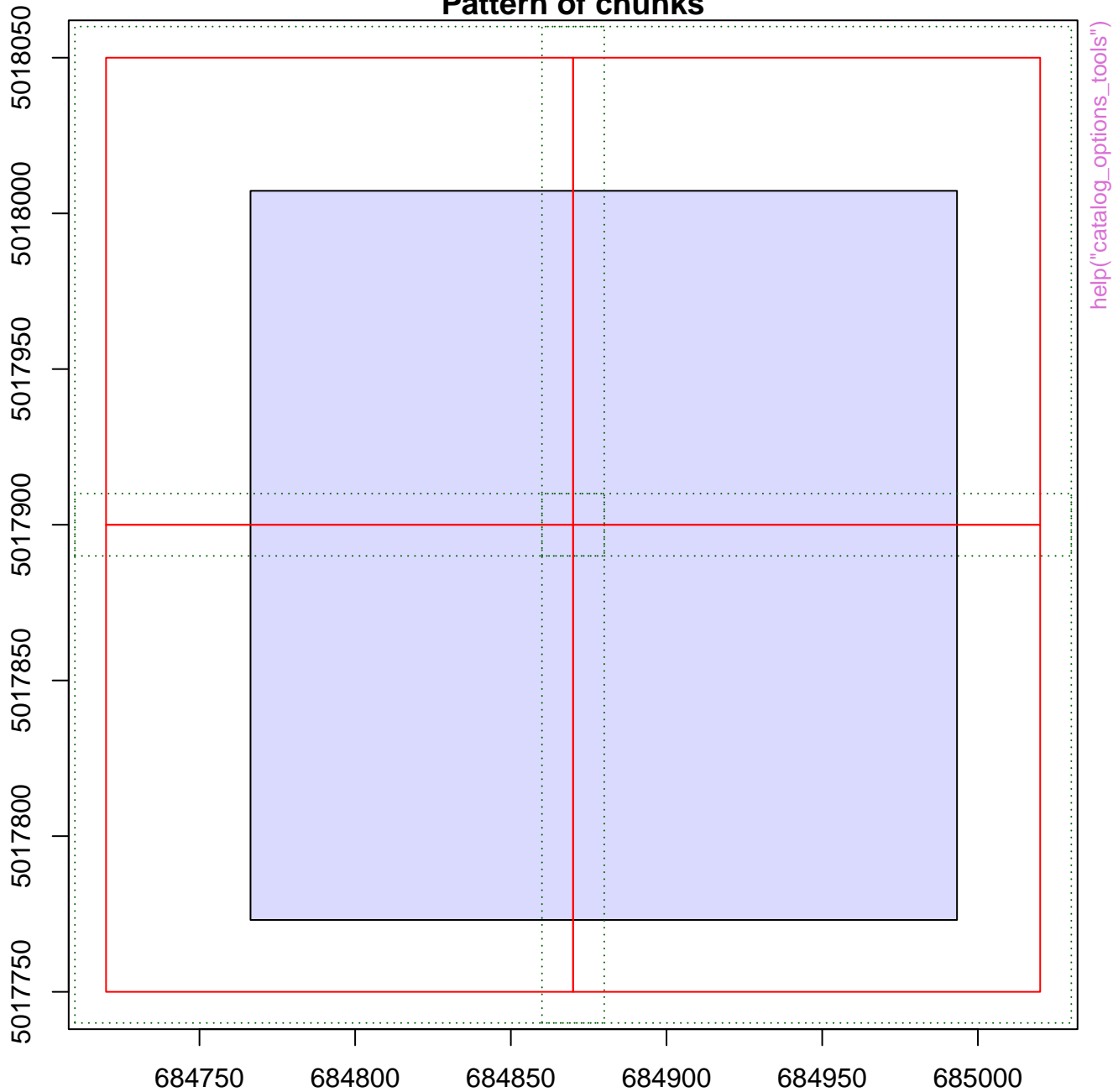




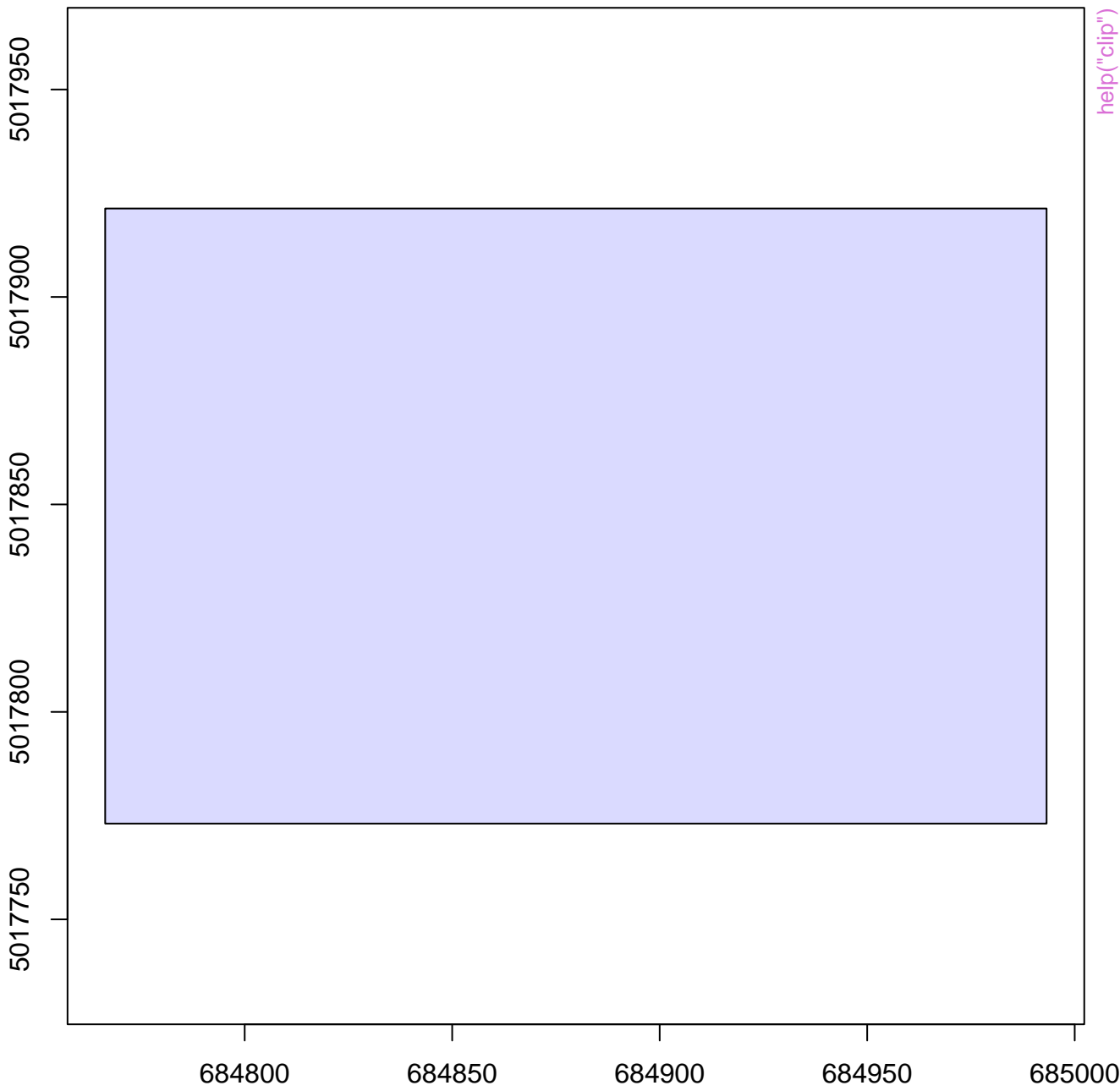
# Pattern of chunks



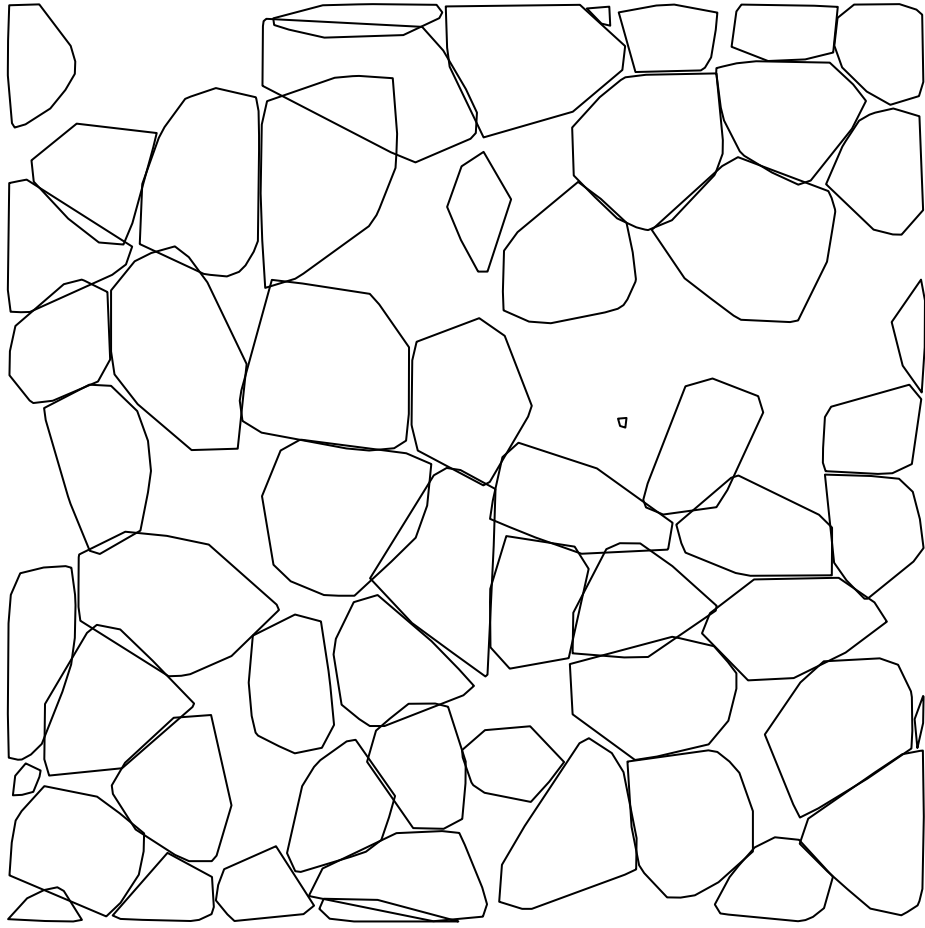
# Pattern of chunks

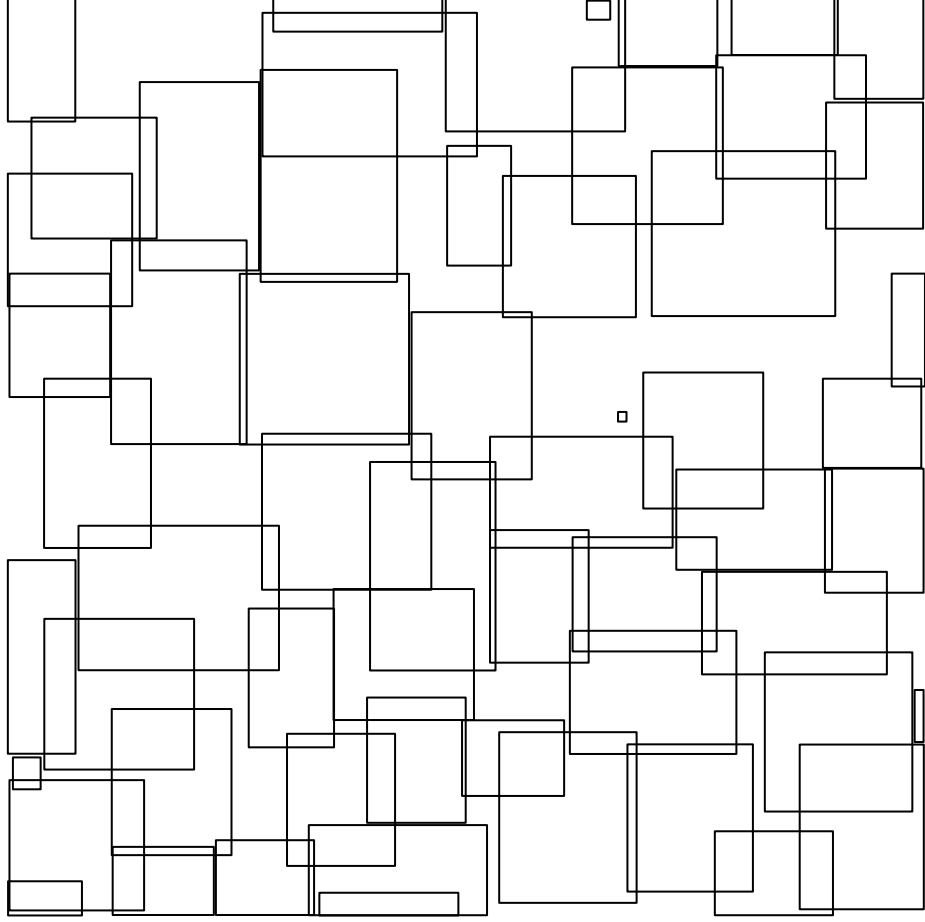


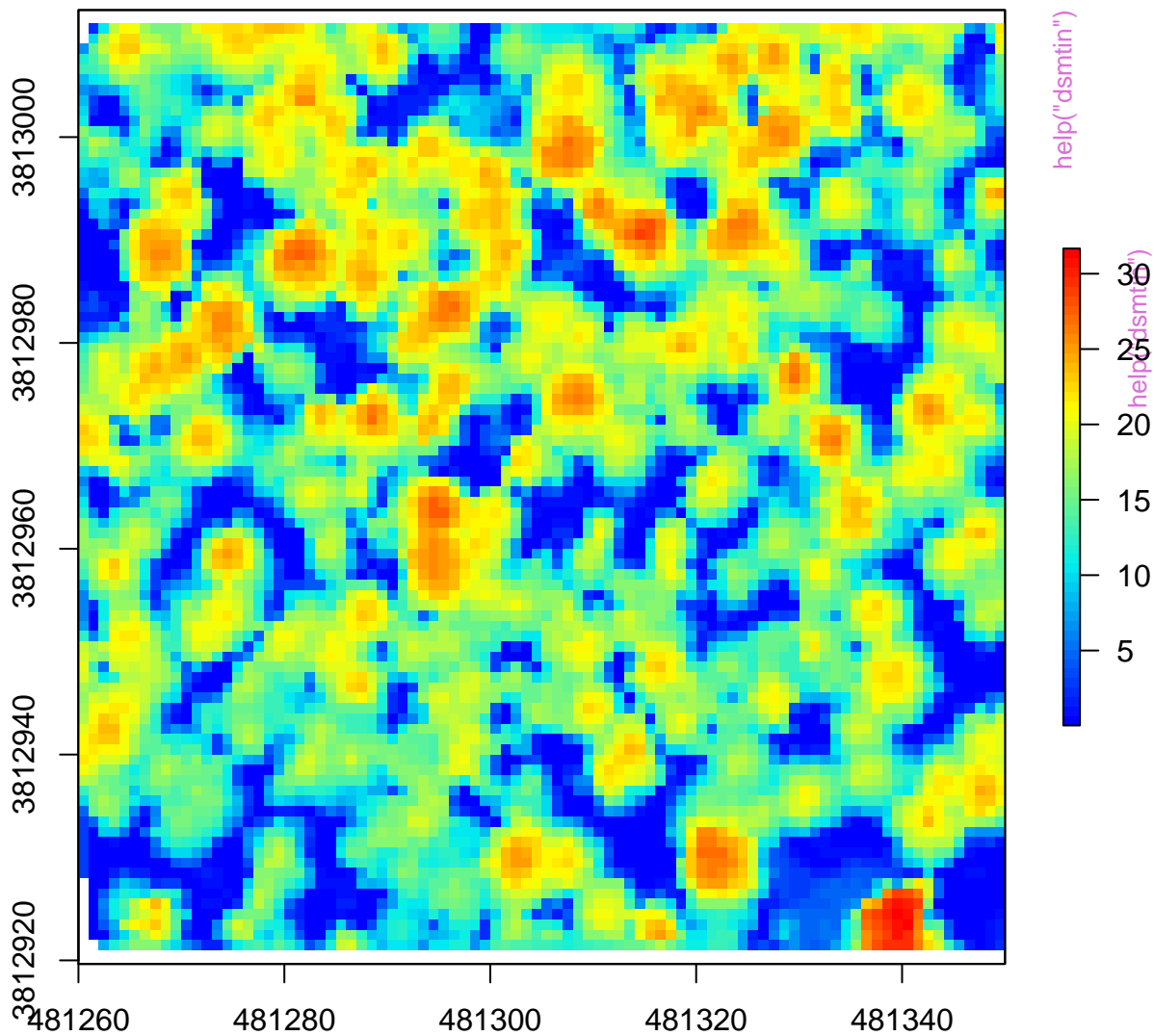
help("catalog\_options\_tools")

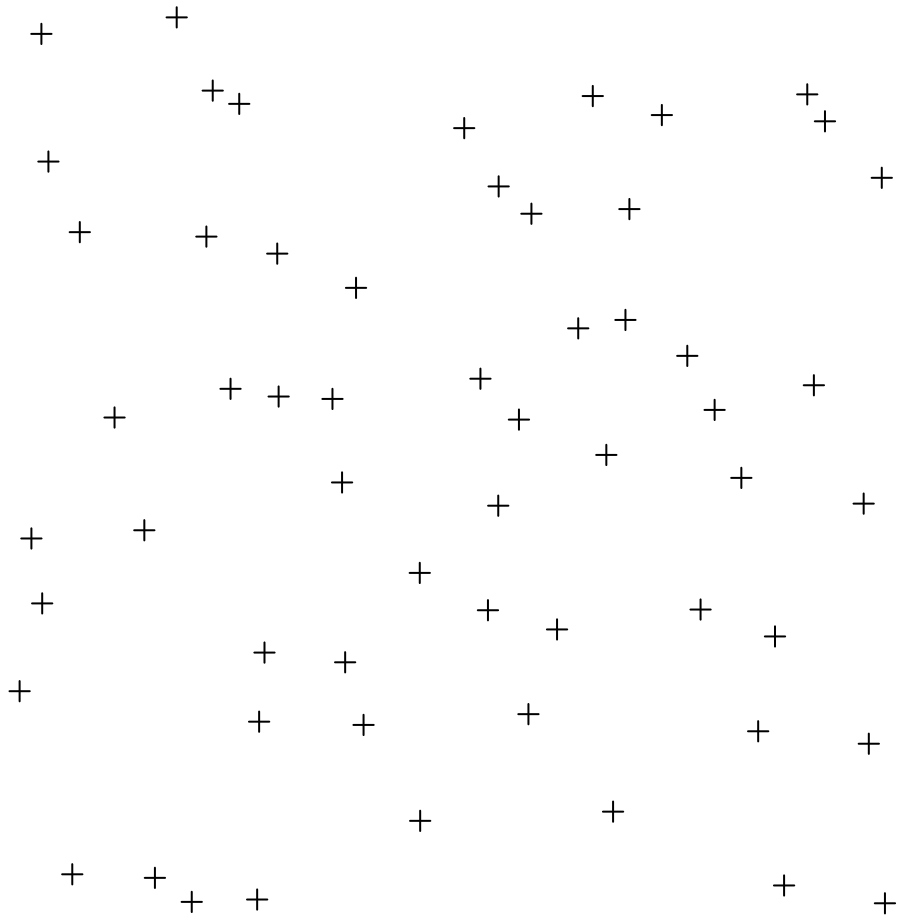


help("clip")



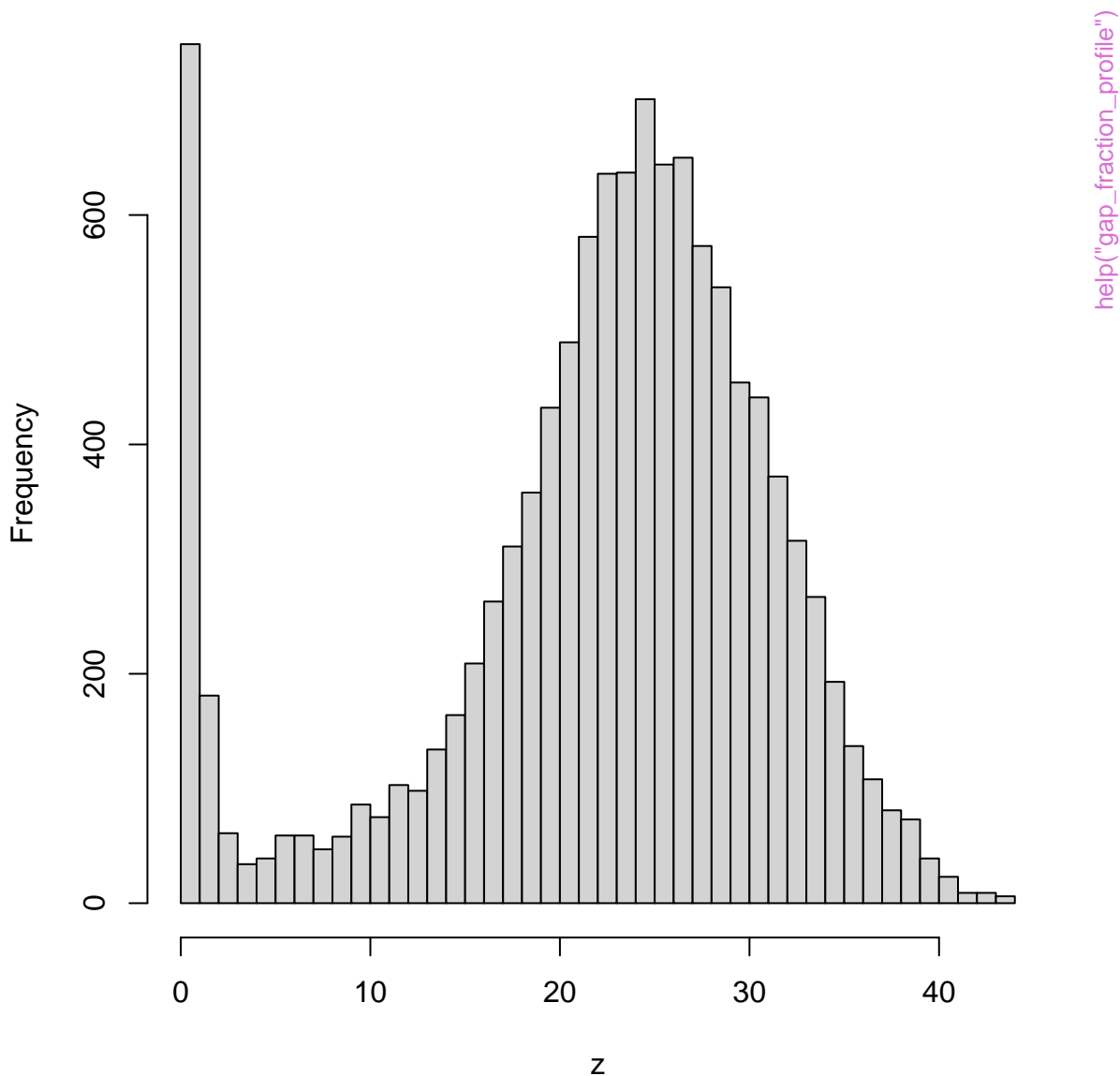




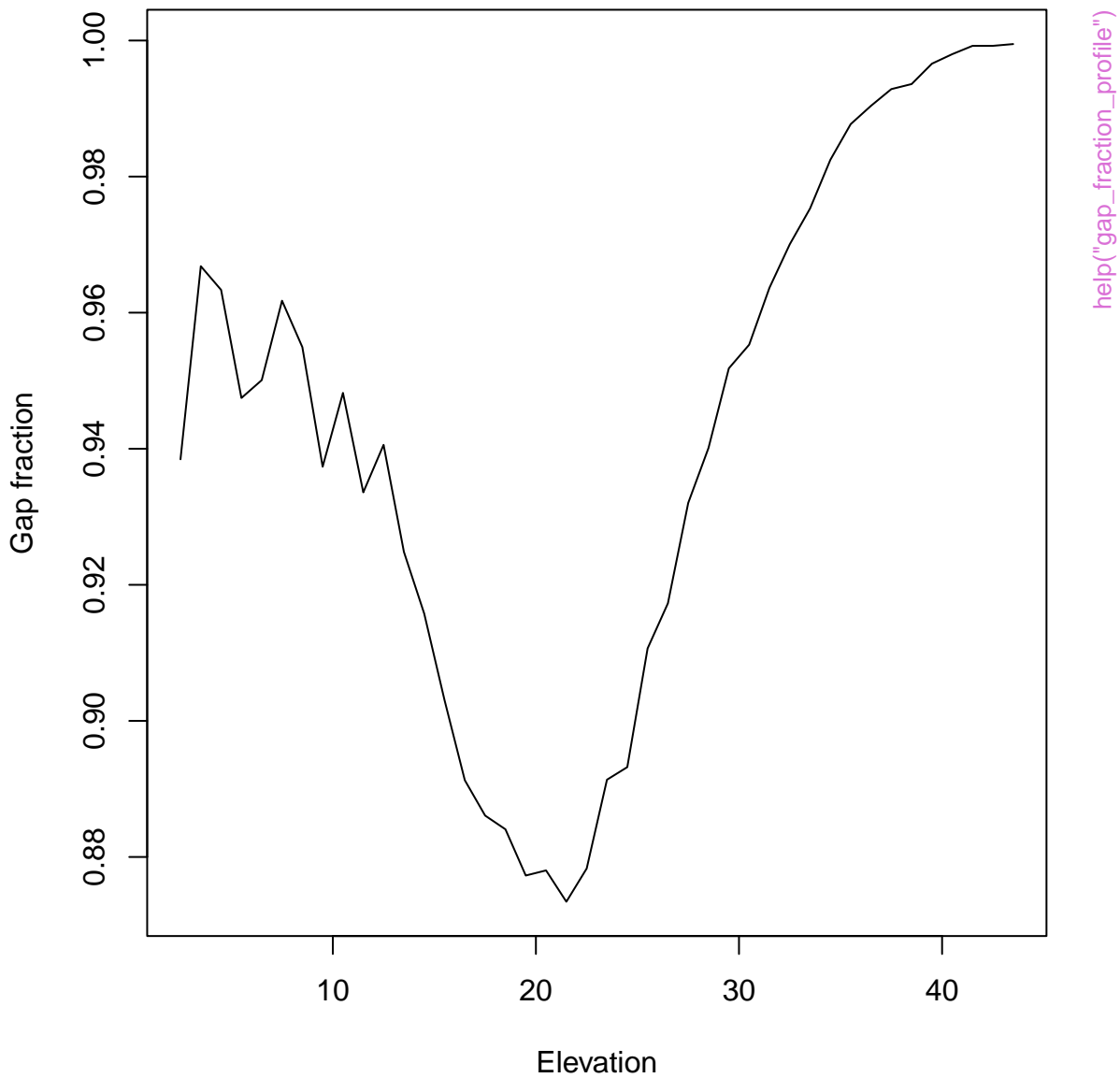


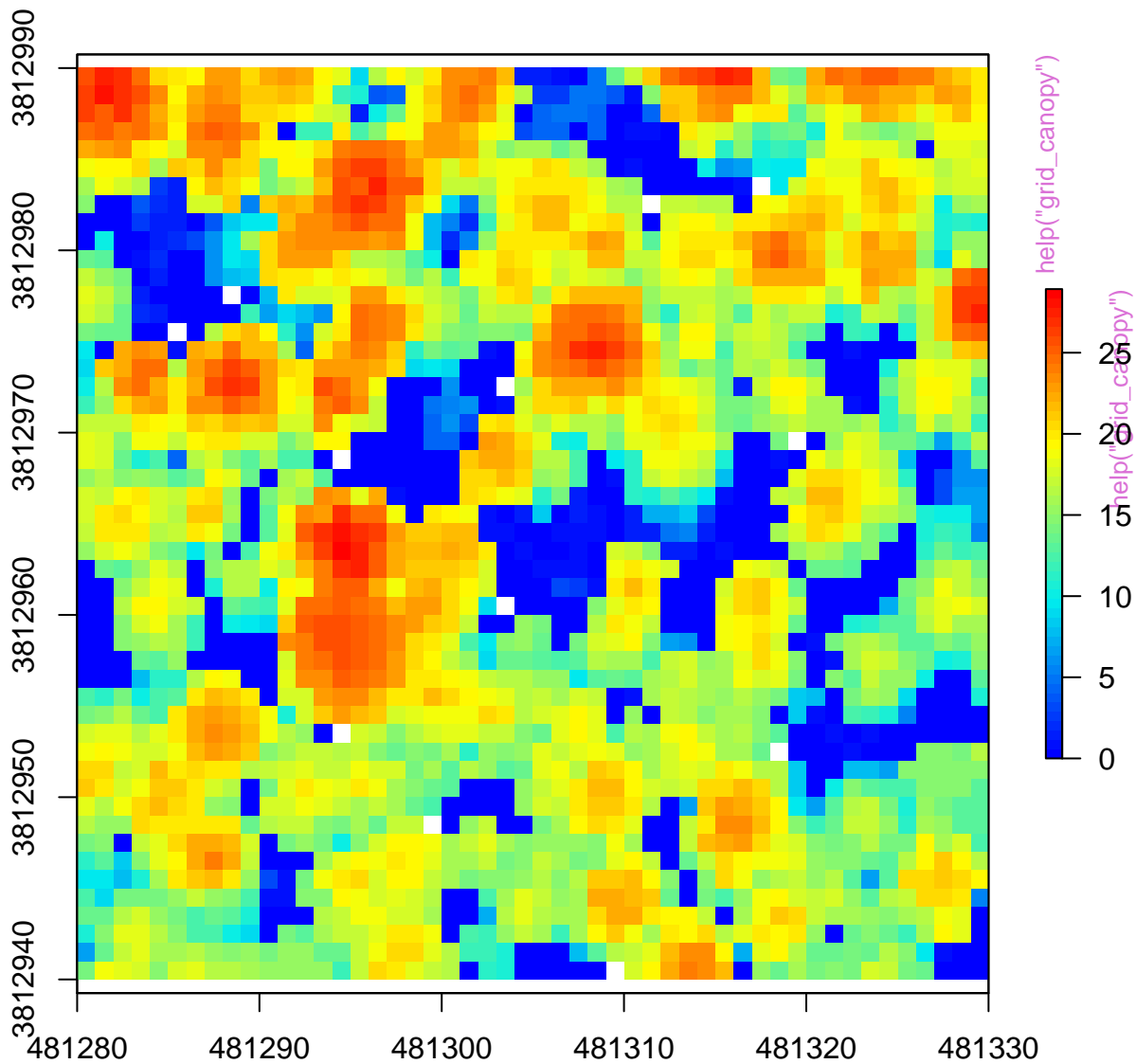
`help("find_localmaxima")`

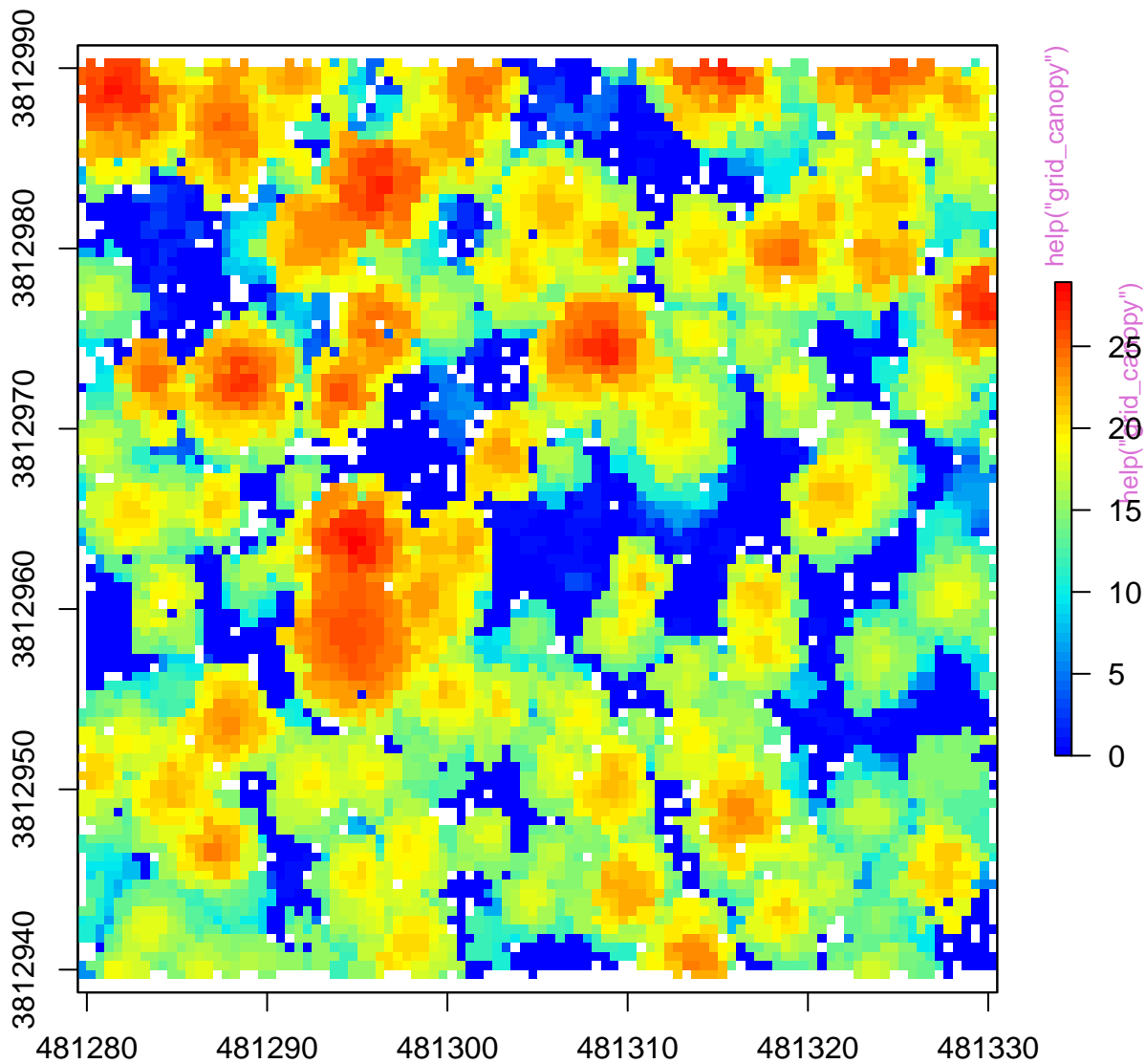
Histogram of z

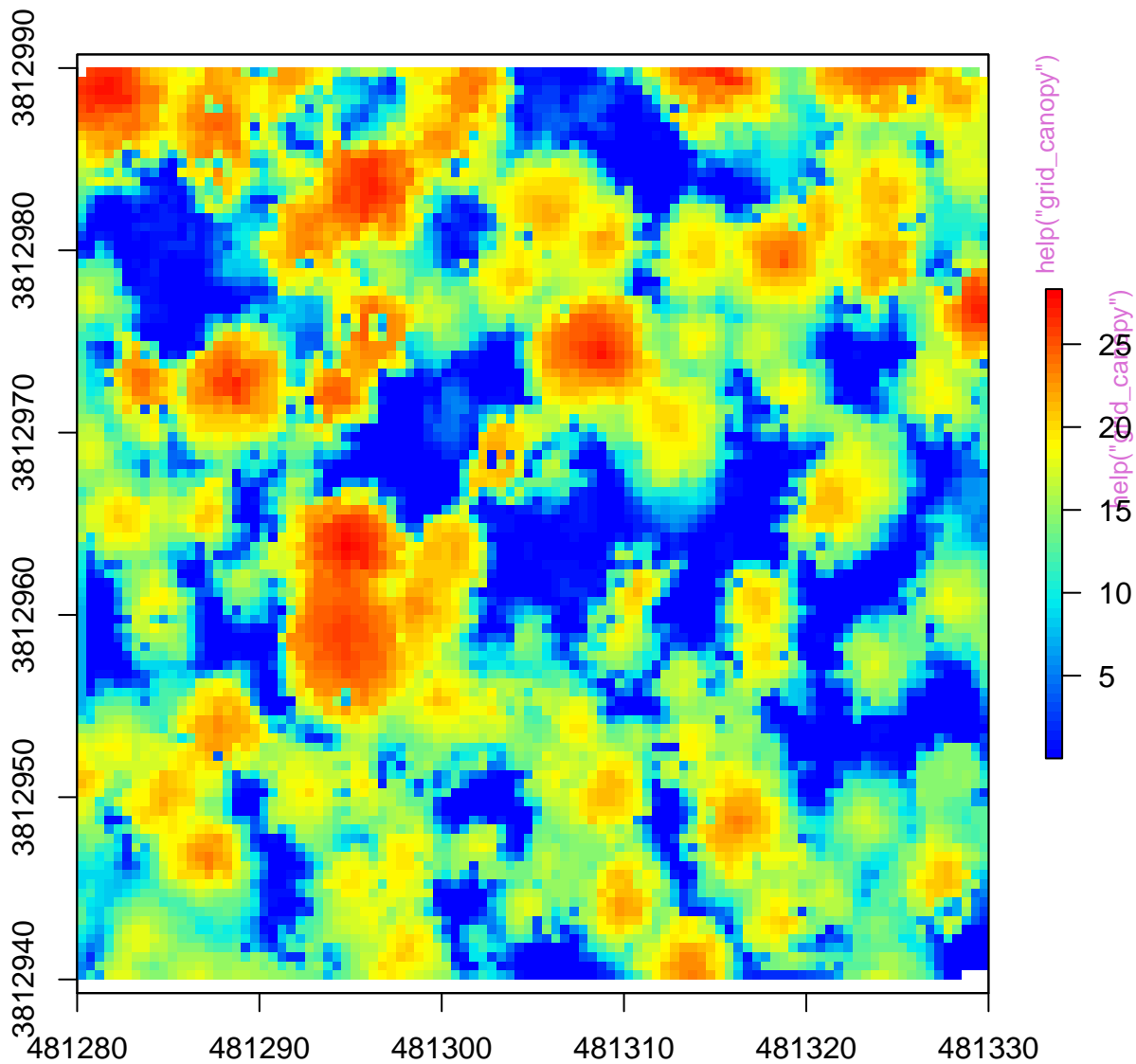


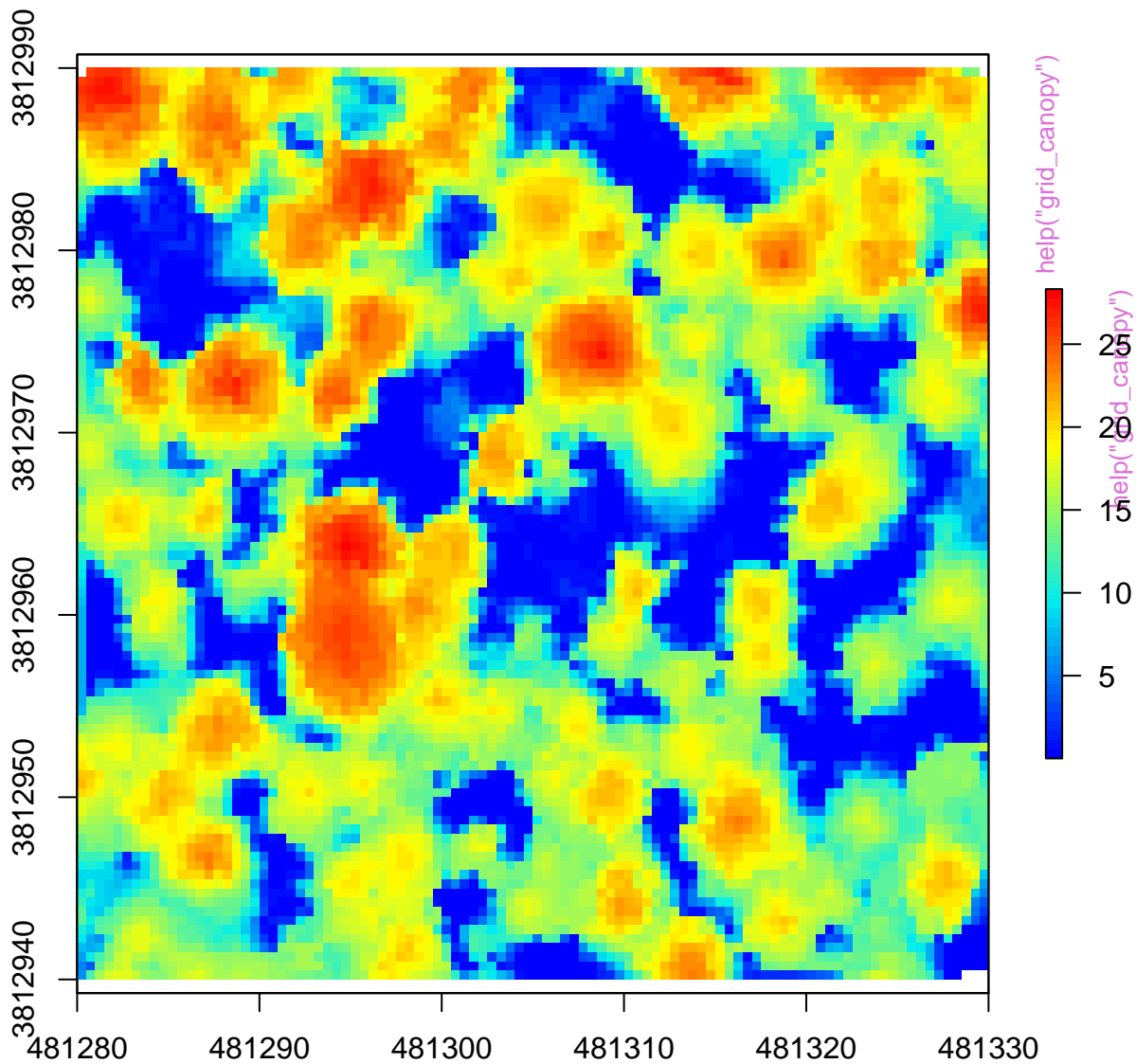


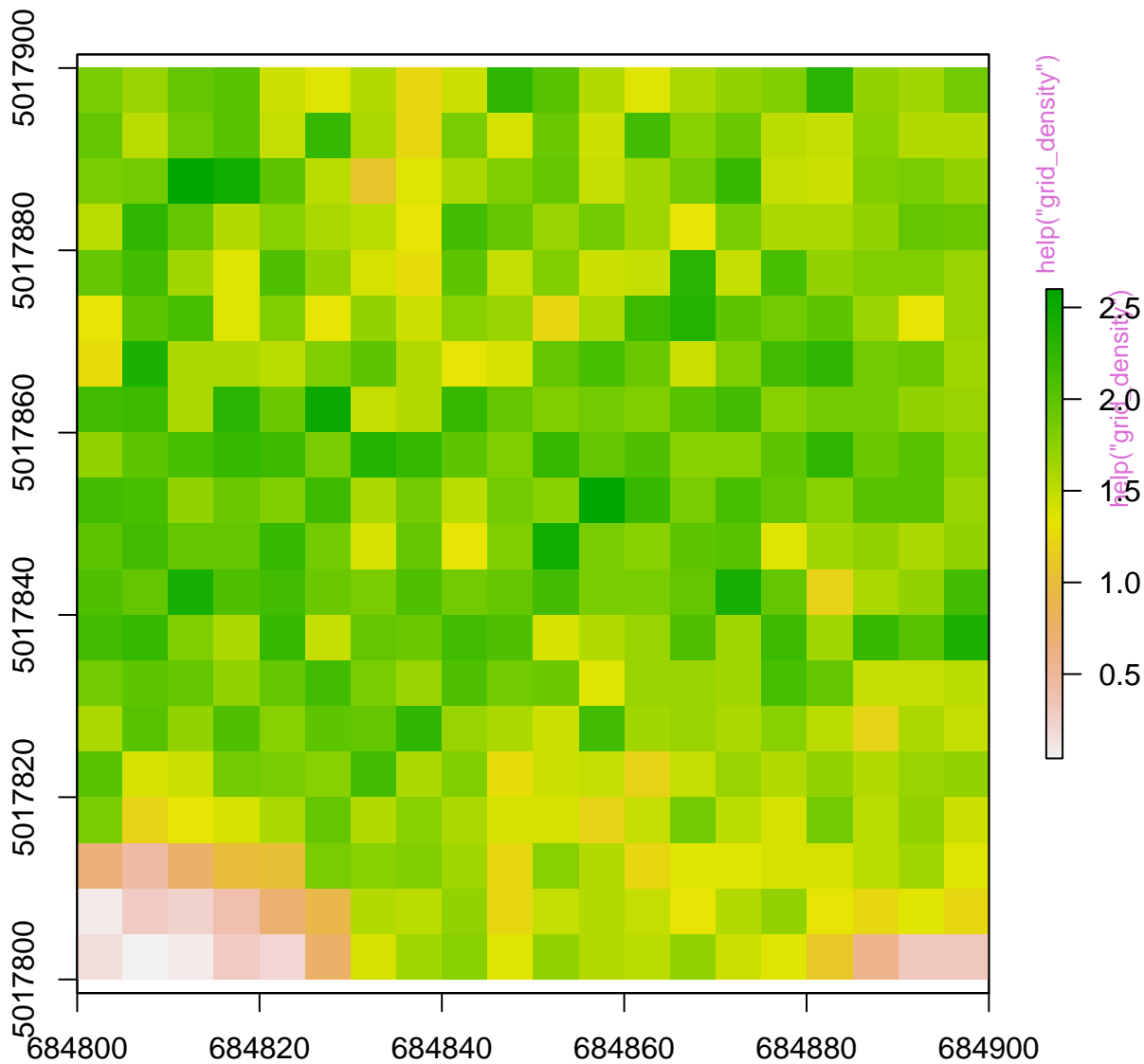




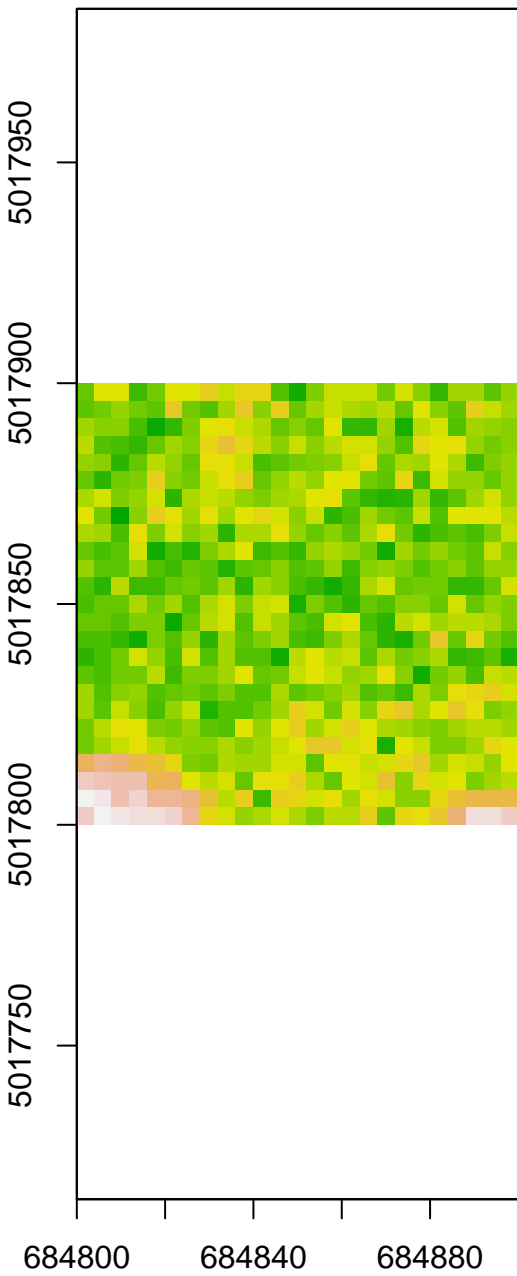




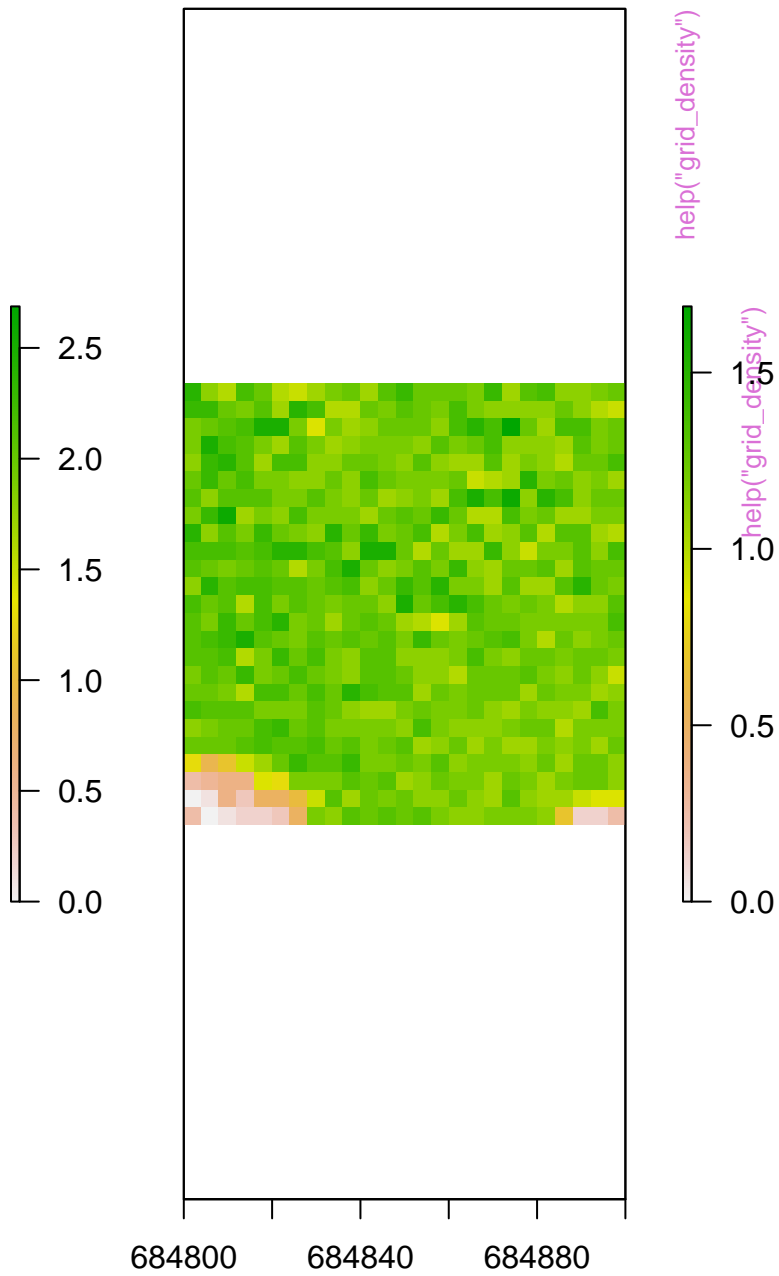




point\_density

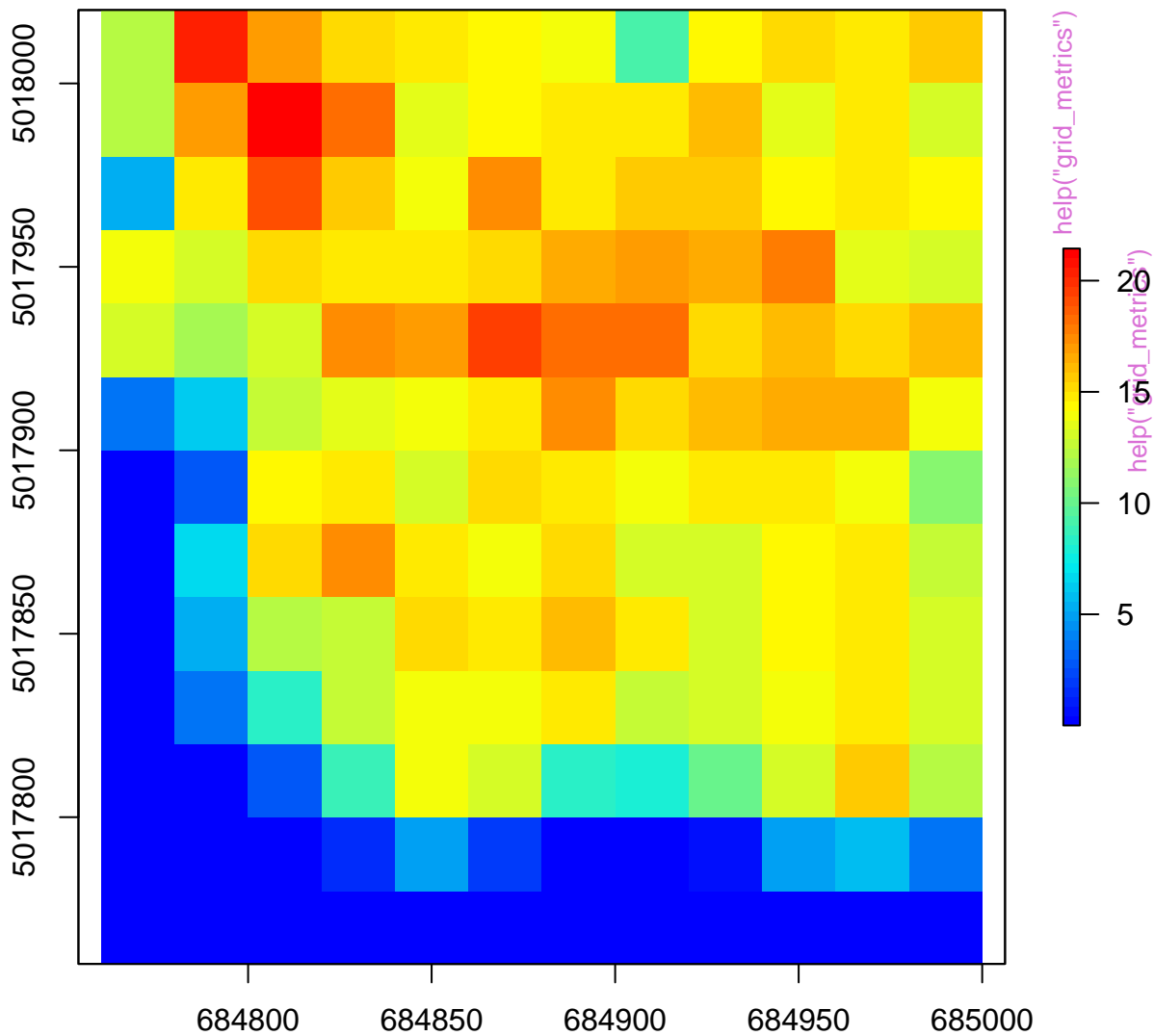


pulse\_density



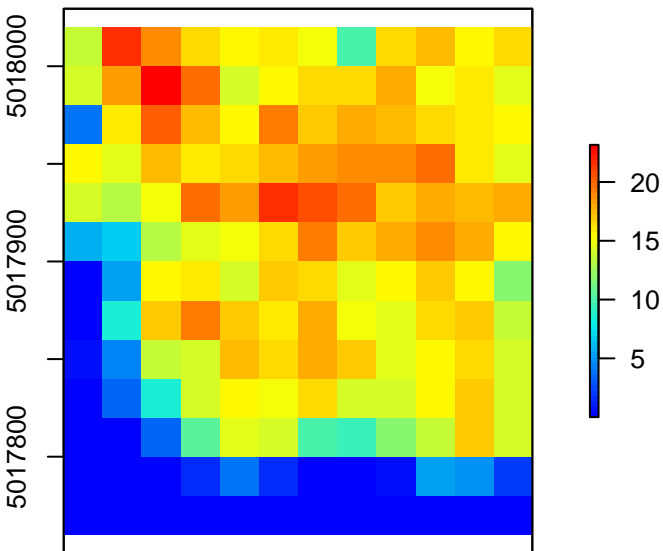
help("grid\_density")

help("grid\_density")

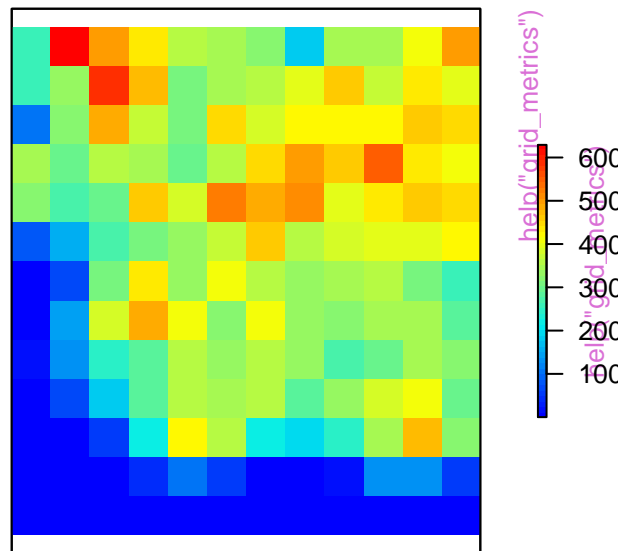




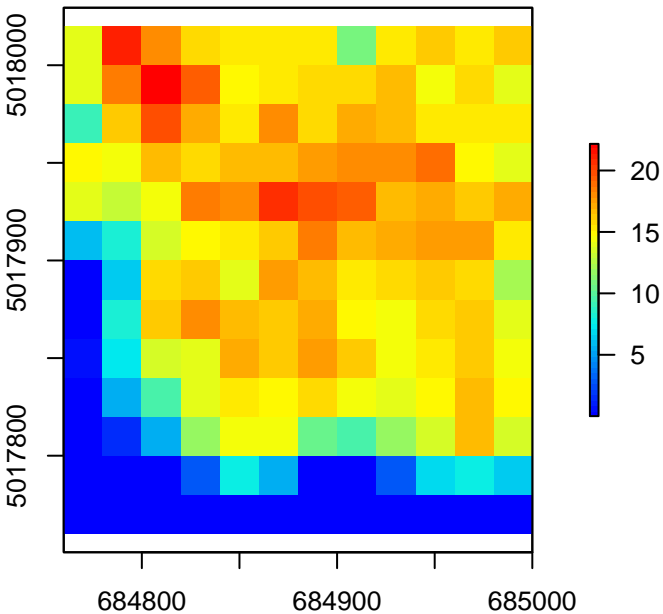
zwimean



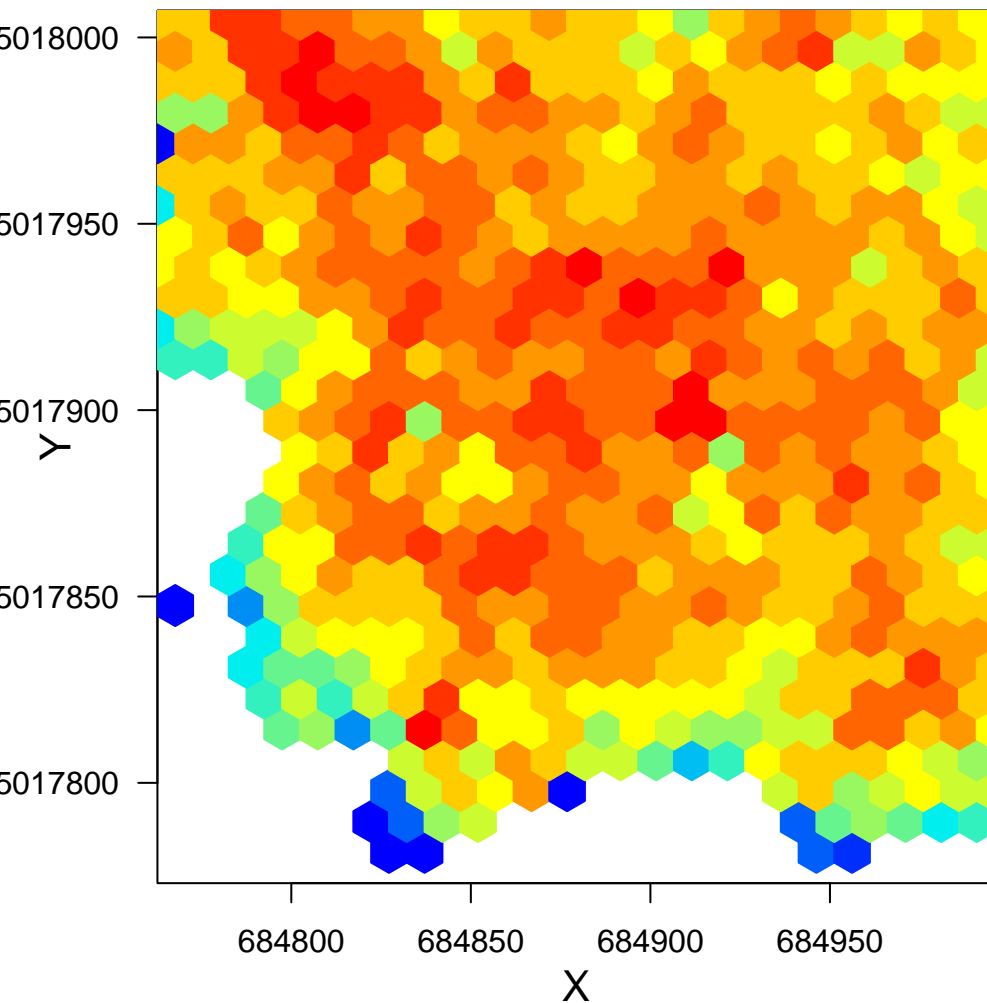
zimean



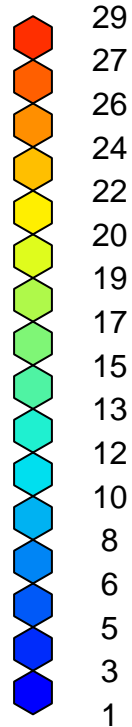
zsqrmean



# Max Z

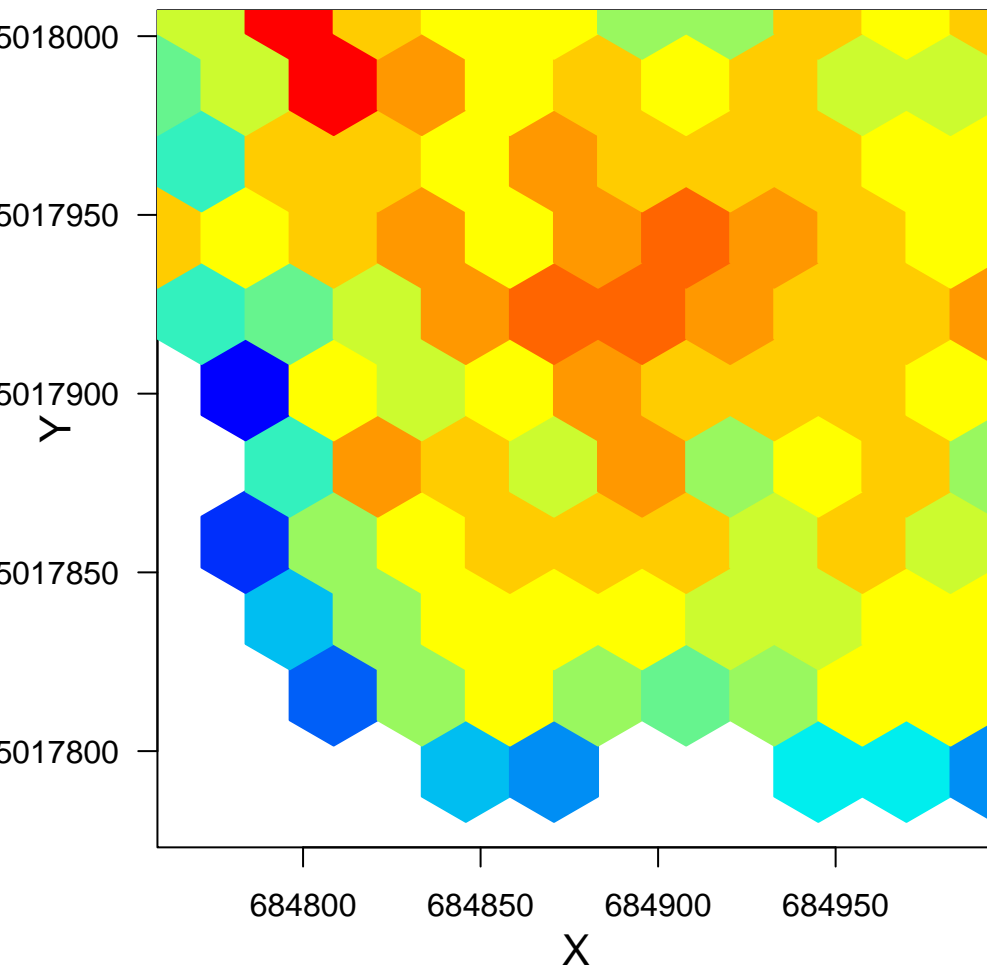


Counts

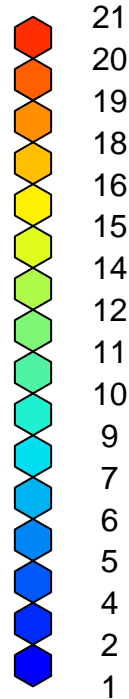


help("hexbin\_metrics")

# Mean Z



## Counts



help("hexbin\_metrics")

zwimean

