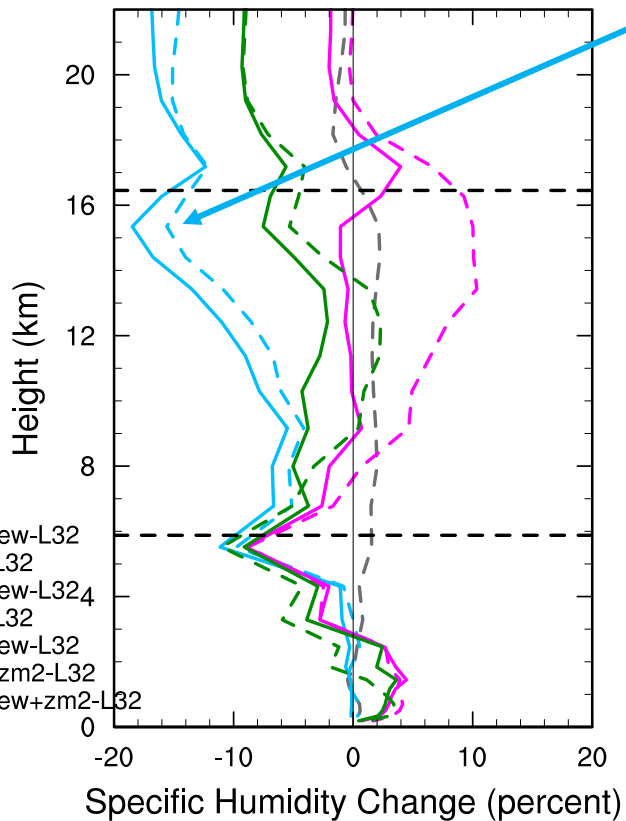


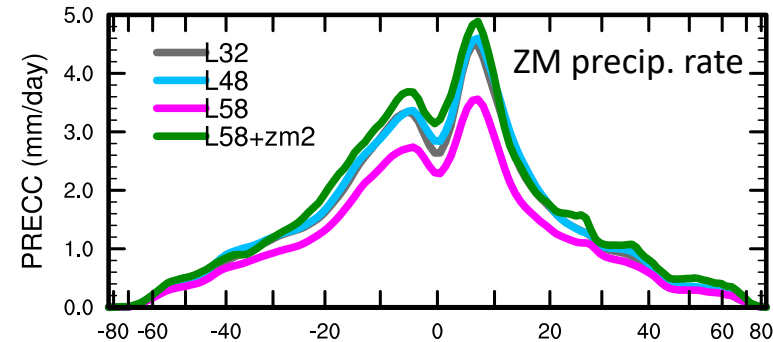
Percent change relative to L32
(avg. over +/-15° lat)



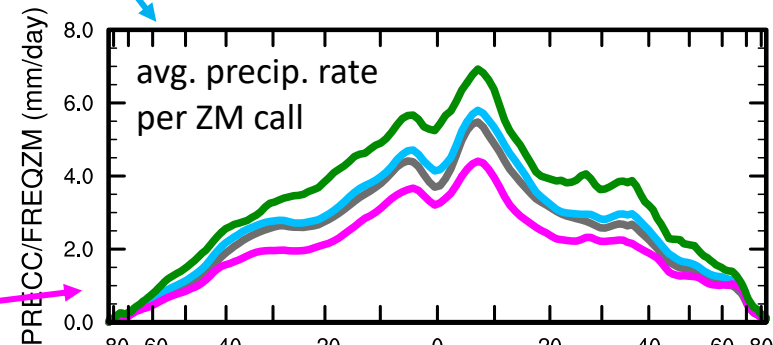
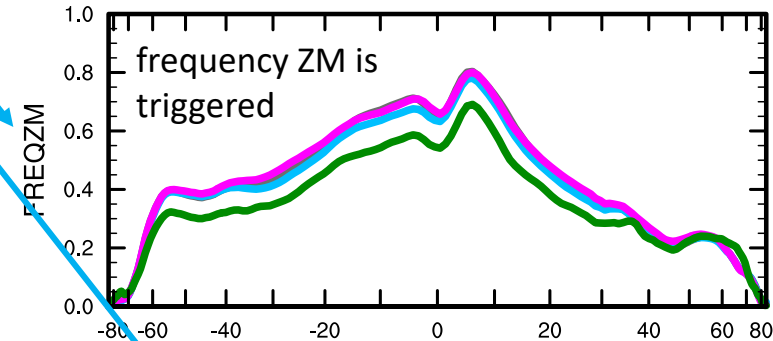
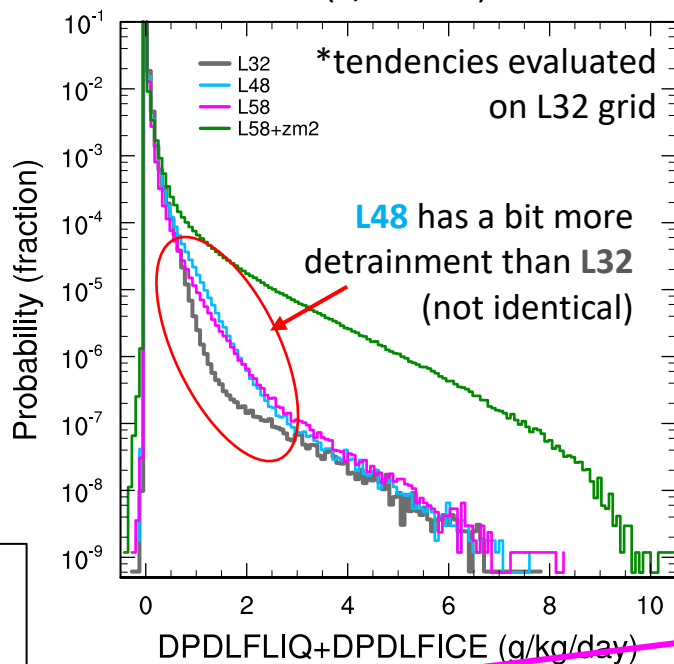
L48 grid

- increased vert. res., but still uses **L32 BL**
- **largest drying in UTLS**
- ZM behaves very similar to **L32**
 - frequency ZM triggered
 - avg. precip rate. per ZM call
 - ~similar detrainment rates

Climatological Zonal Means
(10 year ANN)



PDF of Detrained Condensates
(+/-15° lat)



L58 grid

- **L48** but w/ 10 additional layers in BL
- ZM is weaker than **L48**
 - avg. precip rate. per ZM call
 - **ZM2** developed to eliminate BL sens.

Dry bias not due to sensitivity of ZM to vert. res; ZM is mostly sensitive to BL res!
(L58 counteracts drying from incr. free-tropo/lower-strat resolution in L48. Why?)