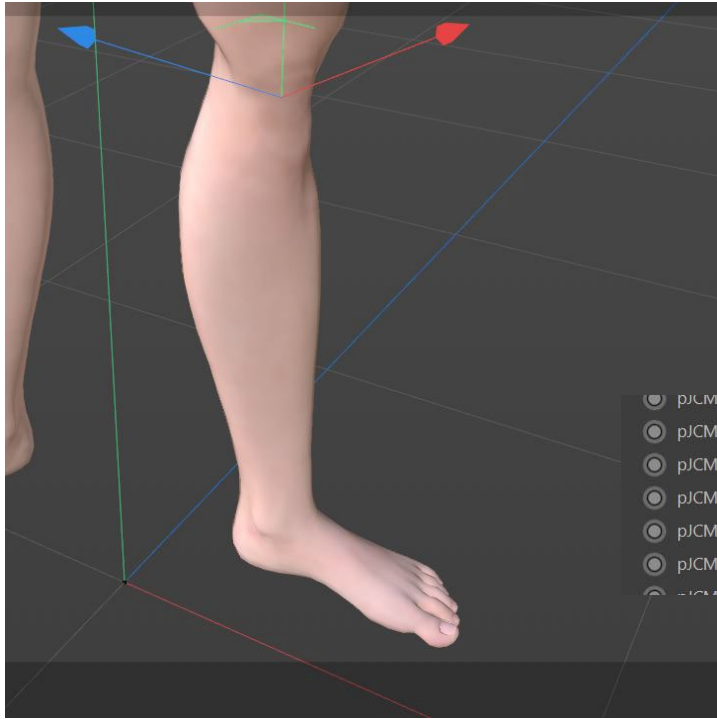


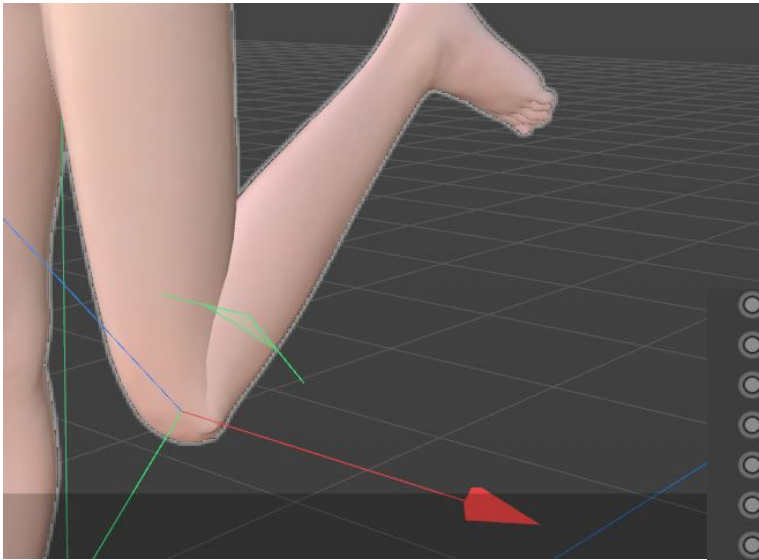
How Bridge JCM is using incorrect axis. Shin example



<input type="radio"/>	pJCMShinBend_40_L . . . . .	0 %	
<input type="radio"/>	pJCMShinBend_90_R . . . . .	0 %	
<input checked="" type="radio"/>	pJCMShinBend_90_L . . . . .	86.667 %	<input type="text" value="86.667"/>
<input type="radio"/>	pJCMShinBend_155_R . . . . .	0 %	
<input type="radio"/>	pJCMShinBend_155_L . . . . .	0 %	
<input type="radio"/>	pJCMPelvisFwd_25 . . . . .	0 %	
<input type="radio"/>	pJCMPelvisTwist_22_R . . . . .	0 %	

The JCM is responding to the incorrect axis

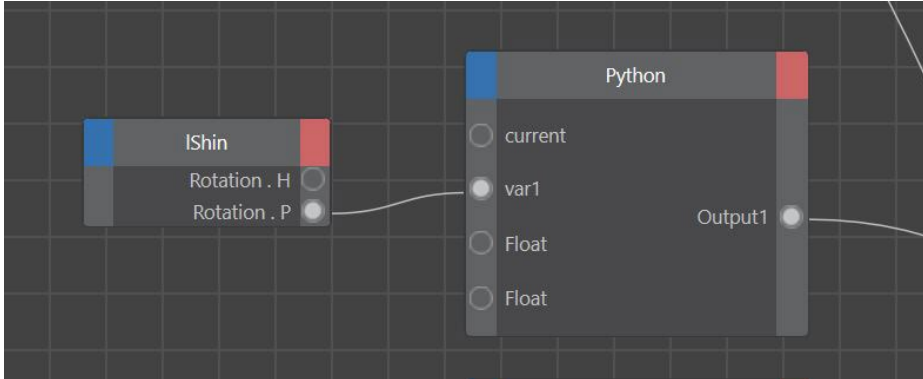
“H” or “X” is twisting



<input type="radio"/>	pJCMShinBend_90_R_ . . . . .	0 %	⌵
<input type="radio"/>	pJCMShinBend_90_L_ . . . . .	0 %	⌵
<input type="radio"/>	pJCMShinBend_155_R_ . . . . .	0 %	⌵
<input type="radio"/>	pJCMShinBend_155_L_ . . . . .	0 %	⌵
<input type="radio"/>	pJCMPelvisFwd_25 . . . . .	0 %	⌵
<input type="radio"/>	pJCMNeckTwist_22_R . . . . .	0 %	⌵
<input type="radio"/>	pJCMNeckTwist_22_L . . . . .	0 %	⌵
<input type="radio"/>	pJCMNeckLowerSide_40_R . . . . .	0 %	⌵
<input type="radio"/>	pJCMNeckLowerSide_40_L_ . . . . .	0 %	⌵

The JCM is not responding to the correct axis

“P” or “Y” is bending



When I change the axis to “P” or “Y”



The JCM is responding to the correct axis