

<https://github.com/googleapis/google-cloud-dotnet/issues/9868>

With Sized1 for both trace and logging

- All logs are captured, and traced correctly

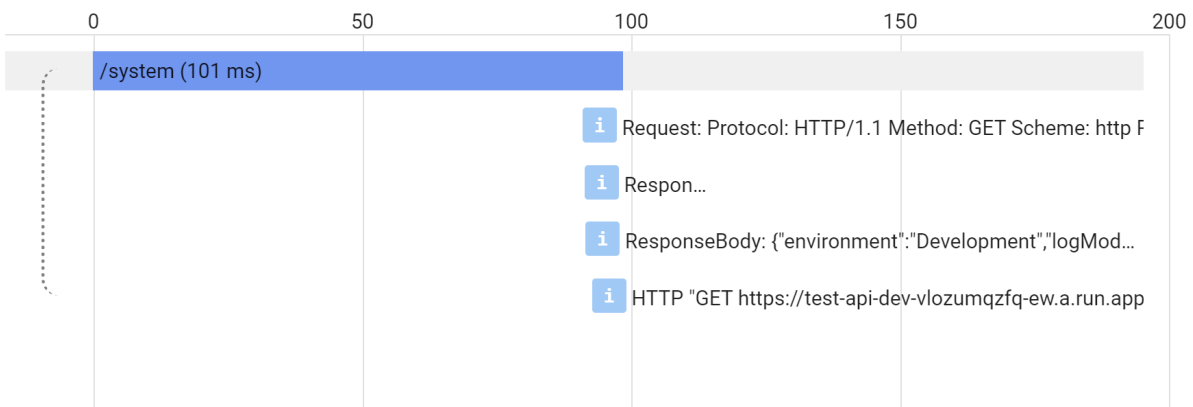
>	i	2023-03-09 08:17:17.032 GMT	Request starting HTTP/1.1 GET http://test-api-dev-vlozumqzfq-ew.a.run.app/system - -
>	i	2023-03-09 08:17:17.033 GMT	Request: Protocol: HTTP/1.1 Method: GET Scheme: http PathBase: Path: /system QueryString:
>	i	2023-03-09 08:17:17.142 GMT	Response:
>	i	2023-03-09 08:17:17.143 GMT	ResponseBody: {"environment":"Development","logMode":"Sized1","traceMode":"Sized1"}
>	i	2023-03-09 08:17:17.143 GMT	Request finished HTTP/1.1 GET http://test-api-dev-vlozumqzfq-ew.a.run.app/system - - 200 - application/json;charset=utf-8 110.5874ms
>	i	2023-03-09 08:17:17.144 GMT	GET 200 820 B 113 ms Chrome 110.0... https://test-api-dev-vlozumqzfq-ew.a.run.app/system
>	i	2023-03-09 08:17:17.716 GMT	Request starting HTTP/1.1 GET http://test-api-dev-vlozumqzfq-ew.a.run.app/system - -
>	i	2023-03-09 08:17:17.801 GMT	Request: Protocol: HTTP/1.1 Method: GET Scheme: http PathBase: Path: /system QueryString:
>	i	2023-03-09 08:17:17.801 GMT	Response:
>	i	2023-03-09 08:17:17.801 GMT	ResponseBody: {"environment":"Development","logMode":"Sized1","traceMode":"Sized1"}
>	i	2023-03-09 08:17:17.801 GMT	Request finished HTTP/1.1 GET http://test-api-dev-vlozumqzfq-ew.a.run.app/system - - 200 - application/json;charset=utf-8 85.4128ms
>	i	2023-03-09 08:17:17.802 GMT	GET 200 819 B 87 ms Chrome 110.0... https://test-api-dev-vlozumqzfq-ew.a.run.app/system
>	i	2023-03-09 08:17:18.371 GMT	Request starting HTTP/1.1 GET http://test-api-dev-vlozumqzfq-ew.a.run.app/system - -
>	i	2023-03-09 08:17:18.372 GMT	Request: Protocol: HTTP/1.1 Method: GET Scheme: http PathBase: Path: /system QueryString:
>	i	2023-03-09 08:17:18.372 GMT	Response:
>	i	2023-03-09 08:17:18.372 GMT	ResponseBody: {"environment":"Development","logMode":"Sized1","traceMode":"Sized1"}
>	i	2023-03-09 08:17:18.466 GMT	GET 200 818 B 95 ms Chrome 110.0... https://test-api-dev-vlozumqzfq-ew.a.run.app/system

Selected trace ID

0d9325a9d5a9b1e169db96dc0a5a341b



Show Logs



With Sized2 for logging, Size1 for tracing and also Size1 for logging and Size2 for tracing

- All logs are ultimately captured and traced correctly.
- I did have to wait until after application shut down for the logs to appear (when Size2 logging) or the traces (when Size2 traces), because the buffer was big enough that it didn't flush with a few requests.
- In Cloud Console, the Logs View that you can get straight from the service page seems to have a bug, as even when we can see full logs and traces in the Logs Explorer and Trace List View, the information logged to the Size2 buffer is never shown here.

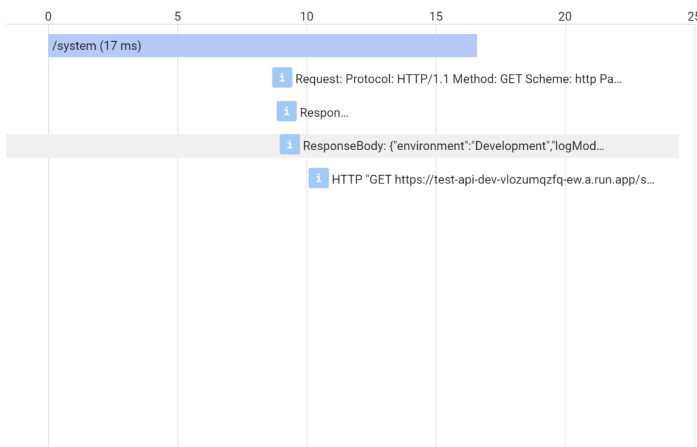
Examples for Size2 log Size1 trace, full logs and traces, in Logs Explorer and Trace List view

>	i	2023-03-09 09:07:45.691 GMT	Request starting HTTP/1.1 GET http://test-api-dev-vlozumqzfq-ew.a.run.app/system - -
>	i	2023-03-09 09:07:45.691 GMT	Request: Protocol: HTTP/1.1 Method: GET Scheme: http PathBase: Path: /system QueryString:
>	i	2023-03-09 09:07:45.691 GMT	Response:
>	i	2023-03-09 09:07:45.691 GMT	ResponseBody: {"environment":"Development","logMode":"Size2","traceMode":"Size1"}
>	i	2023-03-09 09:07:45.691 GMT	Request finished HTTP/1.1 GET http://test-api-dev-vlozumqzfq-ew.a.run.app/system - - - 200 - application/json;charset=utf-8 0.7520ms
>	i	2023-03-09 09:07:45.692 GMT	GET 200 818 B 3 ms Chrome 110.0... https://test-api-dev-vlozumqzfq-ew.a.run.app/system
>	i	2023-03-09 09:07:46.248 GMT	Request starting HTTP/1.1 GET http://test-api-dev-vlozumqzfq-ew.a.run.app/system - -
>	i	2023-03-09 09:07:46.249 GMT	Request: Protocol: HTTP/1.1 Method: GET Scheme: http PathBase: Path: /system QueryString:
>	i	2023-03-09 09:07:46.249 GMT	Response:
>	i	2023-03-09 09:07:46.249 GMT	ResponseBody: {"environment":"Development","logMode":"Size2","traceMode":"Size1"}
>	i	2023-03-09 09:07:46.249 GMT	Request finished HTTP/1.1 GET http://test-api-dev-vlozumqzfq-ew.a.run.app/system - - - 200 - application/json;charset=utf-8 0.8577ms
>	i	2023-03-09 09:07:46.251 GMT	GET 200 818 B 3 ms Chrome 110.0... https://test-api-dev-vlozumqzfq-ew.a.run.app/system
>	i	2023-03-09 09:09:23.117 GMT	run.googleapis.com cloud.run.v1.Services.DeleteService atarafamas-joonix/services/test-api-dev atarafamas@cloudadvocacyo... audit_log, met-
>	i	2023-03-09 09:09:27.406 GMT	run.googleapis.com v1 atarafamas-joonix/services/test-api-dev Ready condition status changed to True for Service test-api-dev.
>	i	2023-03-09 09:11:02.559 GMT	Application is shutting down...
>	0	2023-03-09 09:11:02.560 GMT	Hosting stopping

[Show debug pa](#)

Selected trace ID
e2bb90719c2183cc70d7e29384a02245

Show Logs



Log details

@9.1762 ms

ResponseBody:
{"environment":"Development","logMode":"Size2","traceMode":"Size1"}
[Open in Logs Viewer](#)

Full log entry

```
{
  insertId: "1f2cin4f1b9odp"
  jsonPayload: {7}
  resource: {2}
  timestamp: "2023-03-09T09:07:45.691790200Z"
  severity: "INFO"
  labels: {1}
  logName: "projects/atarafamas-joonix/logs/aspnetcore"
  trace:
    "projects/atarafamas-joonix/traces/e2bb90719c2183cc70d7e29384a02245"
  receiveTimestamp: "2023-03-09T09:12:51.822075268Z"
  spanId: "18c5b59b02e6bc00"
  traceSampled: true
}
```

Example of logs captured, but no traces before application shut down when Size1 log, Size2 trace.

SEVERITY	TIMESTAMP	SUMMARY	
>	i	2023-03-09 10:26:41.539 GMT	Request starting HTTP/1.1 GET http://test-api-dev-vlozumqzfq-ew.a.run.app/system - -
>	i	2023-03-09 10:26:41.540 GMT	Request: Protocol: HTTP/1.1 Method: GET Scheme: http PathBase: Path: /system QueryString:
>	i	2023-03-09 10:26:41.540 GMT	Response:
>	i	2023-03-09 10:26:41.540 GMT	ResponseBody: {"environment":"Development","logMode":"Size1","traceMode":"Size2"}
>	i	2023-03-09 10:26:41.605 GMT	Request finished HTTP/1.1 GET http://test-api-dev-vlozumqzfq-ew.a.run.app/system - - - 200 - application/json;charset=utf-8 65.6332ms
>	i	2023-03-09 10:26:41.605 GMT	GET 200 818 B 67 ms Chrome 110 https://test-api-dev-vlozumqzfq-ew.a.run.app/system
>	i	2023-03-09 10:26:42.815 GMT	Request starting HTTP/1.1 GET http://test-api-dev-vlozumqzfq-ew.a.run.app/system - -
>	i	2023-03-09 10:26:42.815 GMT	Request: Protocol: HTTP/1.1 Method: GET Scheme: http PathBase: Path: /system QueryString:
>	i	2023-03-09 10:26:42.816 GMT	Response:
>	i	2023-03-09 10:26:42.901 GMT	GET 200 818 B 87 ms Chrome 110 https://test-api-dev-vlozumqzfq-ew.a.run.app/system

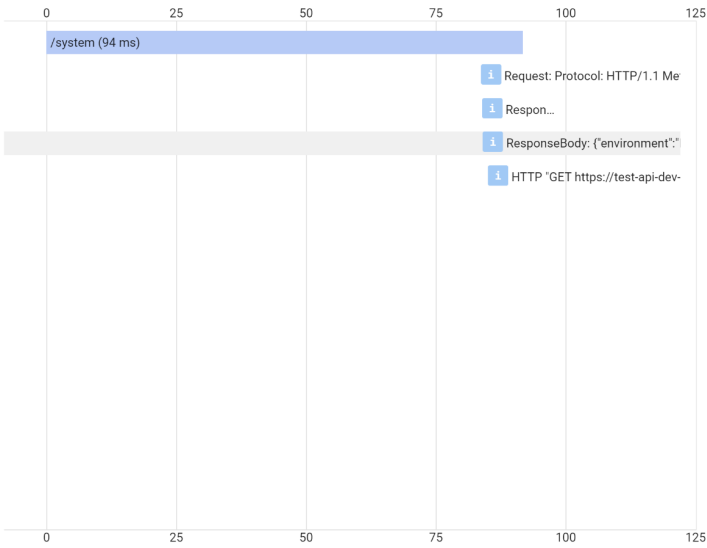
Example of the same logs with full traces after application shutdown, in the Logs Explorer and TraceList view.

>	i	2023-03-09 10:26:39.427 GMT	ResponseBody: {"environment":"Development","logMode":"Sized1","traceMode":"Sized2"}
>	i	2023-03-09 10:26:39.427 GMT	Request finished HTTP/1.1 GET http://test-api-dev-vlozumqzfq-ew.a.run.app/system - - 200 - application/json;charset=utf-8 99.9875ms
>	i	2023-03-09 10:26:39.427 GMT	GET 200 819 B 101 ms Chrome 118.0... https://test-api-dev-vlozumqzfq-ew.a.run.app/system
>	i	2023-03-09 10:26:40.430 GMT	Request starting HTTP/1.1 GET http://test-api-dev-vlozumqzfq-ew.a.run.app/system - -
>	i	2023-03-09 10:26:40.509 GMT	Request: Protocol: HTTP/1.1 Method: GET Scheme: http PathBase: Path: /system QueryString:
>	i	2023-03-09 10:26:40.509 GMT	Response:
>	i	2023-03-09 10:26:40.509 GMT	ResponseBody: {"environment":"Development","logMode":"Sized1","traceMode":"Sized2"}
>	i	2023-03-09 10:26:40.509 GMT	Request finished HTTP/1.1 GET http://test-api-dev-vlozumqzfq-ew.a.run.app/system - - 200 - application/json;charset=utf-8 79.0864ms
>	i	2023-03-09 10:26:40.510 GMT	GET 200 819 B 80 ms Chrome 118.0... https://test-api-dev-vlozumqzfq-ew.a.run.app/system
>	i	2023-03-09 10:26:41.539 GMT	Request starting HTTP/1.1 GET http://test-api-dev-vlozumqzfq-ew.a.run.app/system - -
>	i	2023-03-09 10:26:41.540 GMT	Request: Protocol: HTTP/1.1 Method: GET Scheme: http PathBase: Path: /system QueryString:
>	i	2023-03-09 10:26:41.540 GMT	Response:
>	i	2023-03-09 10:26:41.540 GMT	ResponseBody: {"environment":"Development","logMode":"Sized1","traceMode":"Sized2"}
>	i	2023-03-09 10:26:41.605 GMT	Request finished HTTP/1.1 GET http://test-api-dev-vlozumqzfq-ew.a.run.app/system - - 200 - application/json;charset=utf-8 65.6332ms
>	i	2023-03-09 10:26:41.605 GMT	GET 200 818 B 67 ms Chrome 118.0... https://test-api-dev-vlozumqzfq-ew.a.run.app/system

Show debug panel

Selected trace ID
3a799650ca71c18193f78f8e2cbf5d1d

Show Logs



Log details

@86.0778 ms

ResponseBody:
{"environment":"Development","logMode":"Sized1","traceMode":"Sized2"}
[Open in Logs Viewer](#)

Full log entry

```

{
  insertId: "10d4toif1ivxgg"
  jsonPayload: {
    message:
      {
        ResponseBody:
          {"environment":"Development","logMode":"Sized1","traceMode":"Sized2"}
        serviceContext: (2)
        event_id: (2)
        format_parameters: (2)
        parent_scopes: [2]
        log_name: "Microsoft.AspNetCore.HttpLogging.HttpLoggingMiddleware"
        scope:
          "ConnectionId:0HMP0H2AU521O => RequestPath:/system
          RequestId:0HMP0H2AU521O:00000002"
      }
    resource: (2)
    timestamp: "2023-03-09T10:26:40.509467800Z"
    severity: "INFO"
    labels: (1)
    logName: "projects/atarafamas-joonix/logs/aspnetcore"
    trace:
      "3a799650ca71c18193f78f8e2cbf5d1d"
  }
}

```