

SKIN ON THE FOOT

Rev.	Prepared by		Date	Approved		Date
0.0	iCubFacilty	Marco Maggiali	11/07/2013			17/10/2014

1 Revision history

Rev.	Date	Revision description
0.0	01/07/2013	Preliminary emission

2 Summary

1	Revision history	1
2	Summary.....	2
3	General description.....	3
3.1	Preparation of the PCB	3
3.2	Testing of the PCB.	8

3 General description

The manual describes how to prepare the skin patch of the upperarm .

3.1 Preparation of the PCB

Cut the shapes of the triangles in

- Figure 5-3 and 4 with a very sharp cutter from the sheet of triangles.
- Remove the resist from the pins of the triangle where you have to solder the wires with a cutter if it is present.
 - **Sold the wires (20 cm long) in the triangle patch where indicated by the arrow**

(

- Figure 5 and Figure 6). The cable used is the IITCODE 16 (Teflon insulated cable, 8 poles, AWG32 from Industrifil).
- Crimp the other end of the cable and insert a 8 poles male housing connector (IITCODE 1400) with the wires inserted in the following order:

CABLE	8 PIN CONNECTOR
Black	1
NU	2

Gray	3
Blue/Violet	4
Yellow	5
Green	6
White	7
Red	8

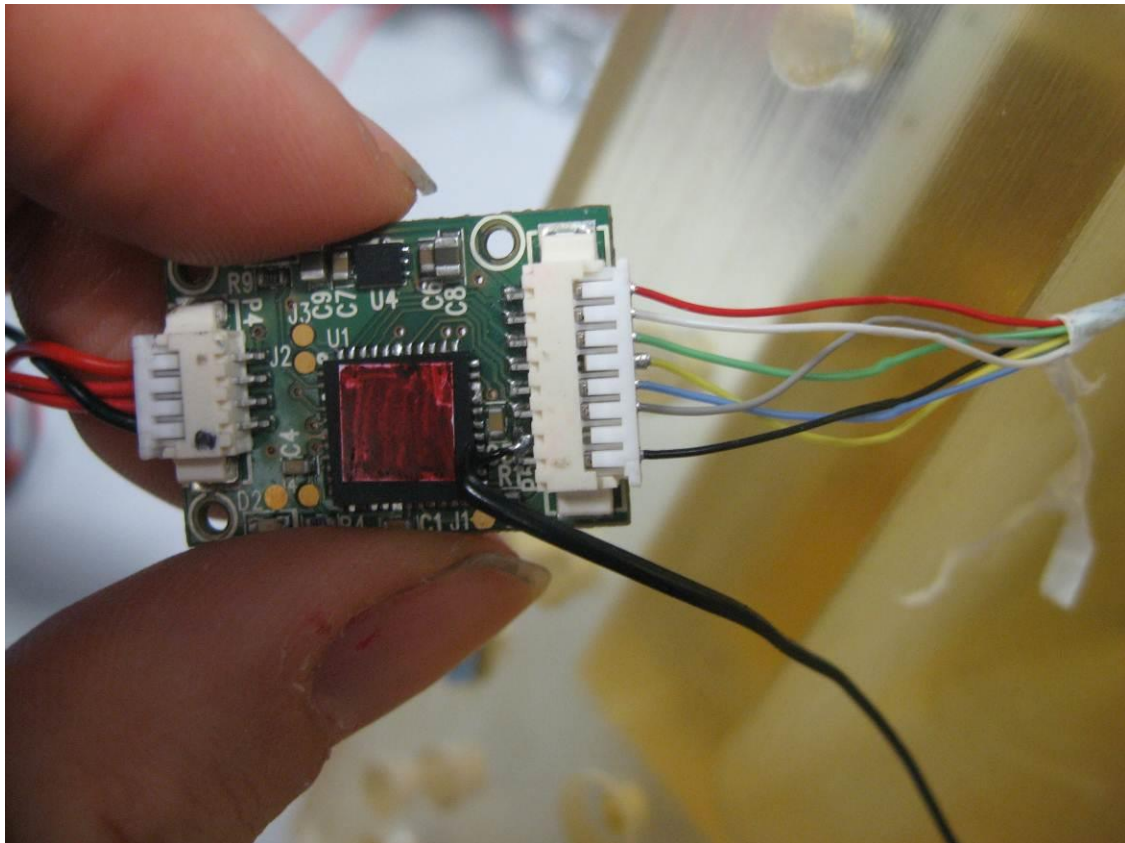
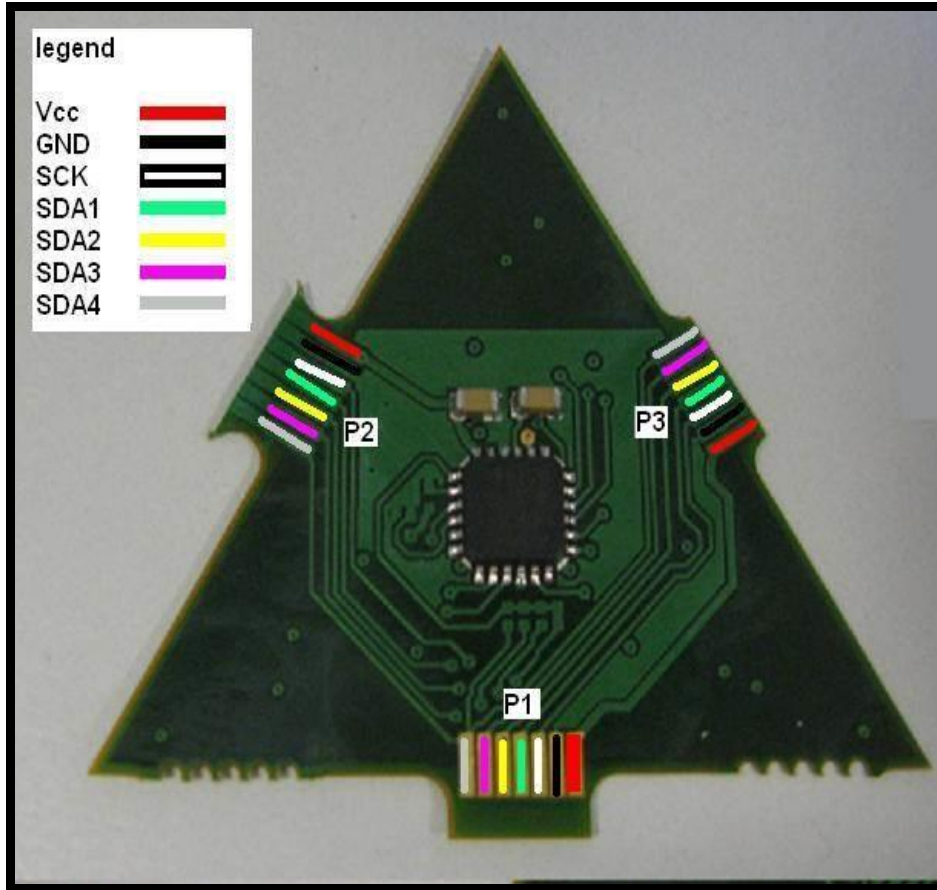


Figure 1 The position of the wires in the connector

Figure 2 The wires must be soldered as described in picture.

- Put a drop of glue on the wires close to the soldering point.



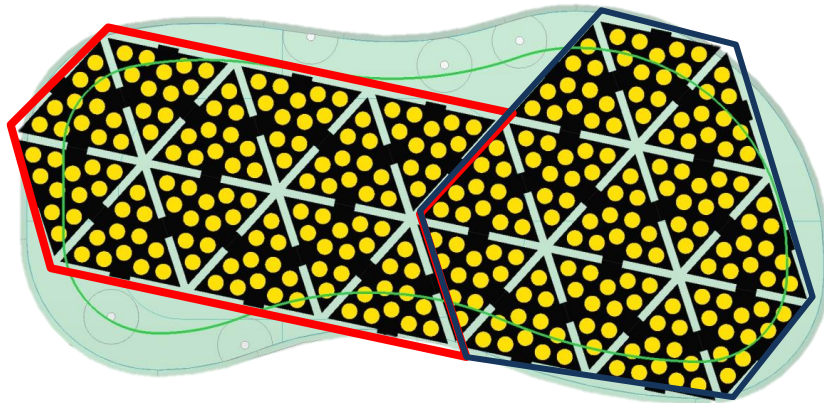


Figure 3 Right Foot

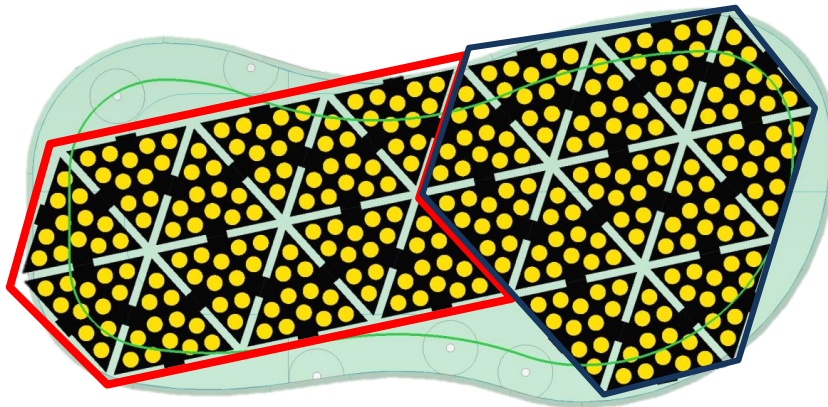


Figure 4 Left Foot

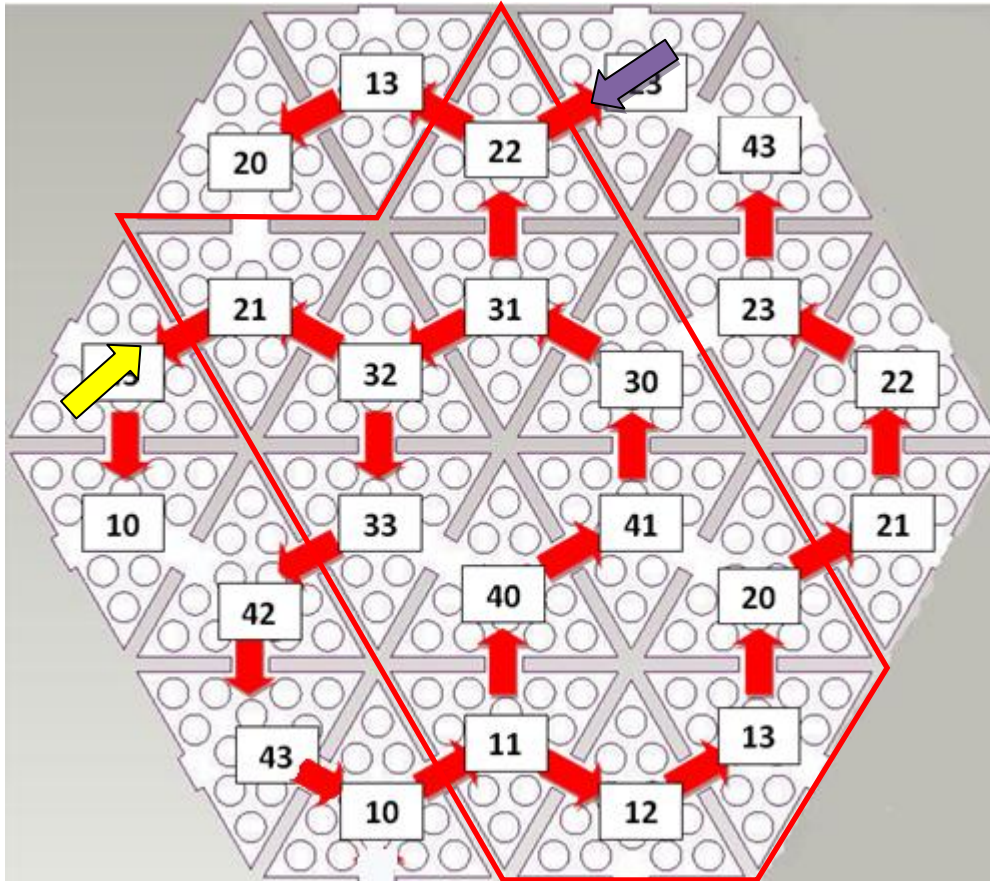


Figure 5 HEXAGON . First patch The yellow arrow is the place where to sold the cables in the right foot.
ATTENTION this is the top view (gold side).

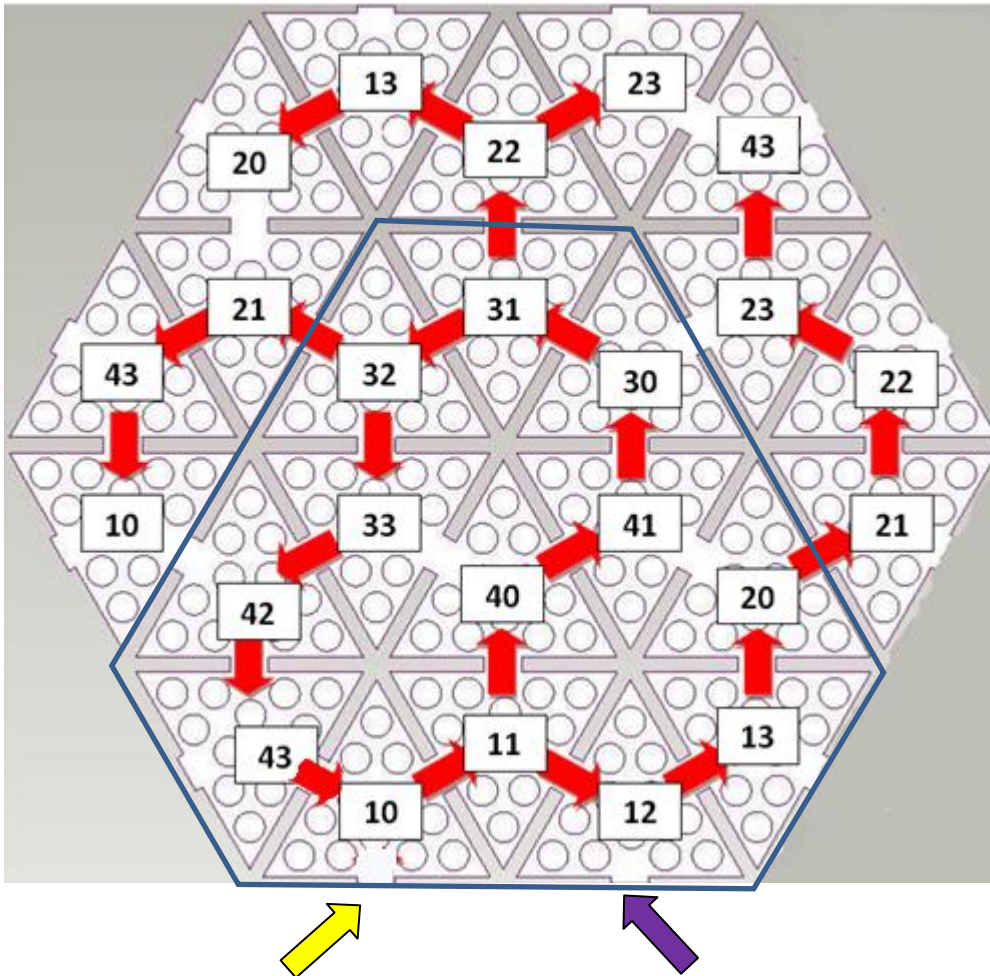


Figure 6 HEXAGON . Second patch. The yellow arrow is the place where to sold the cables for the right foot and orange for the left. **ATTENTION this is the top view (gold side).**

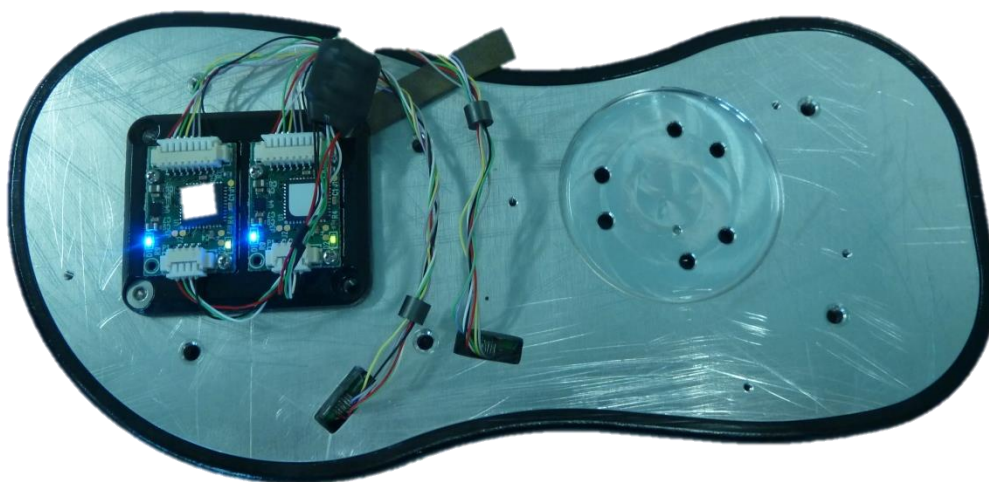


Figure 7 The position of the MTB board and the connection for the left foot. Right foot has the same connection.

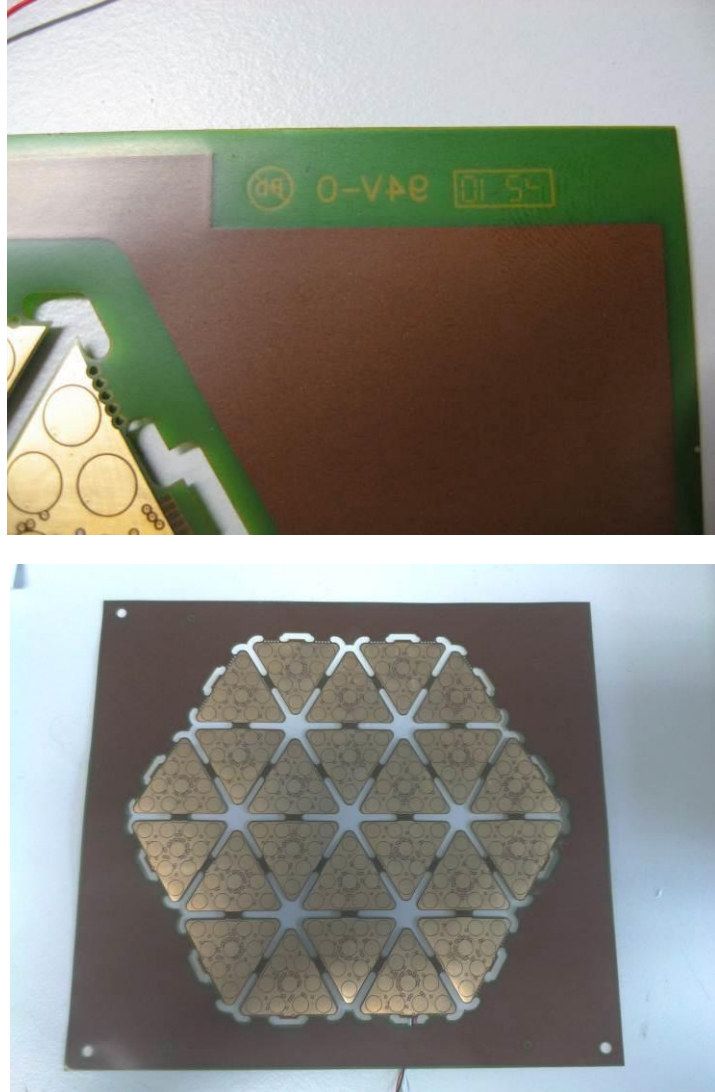


Figure 8 The top right corner of the Octagon pcb can be identify from the label in the picture above or in the case of the Hexagon the top right corner is the one without the gold dot.

3.2 Testing of the PCB.

The testing of the pcb is described in the test procedure document: SC2011_RBCS_RC_SKIN.doc