

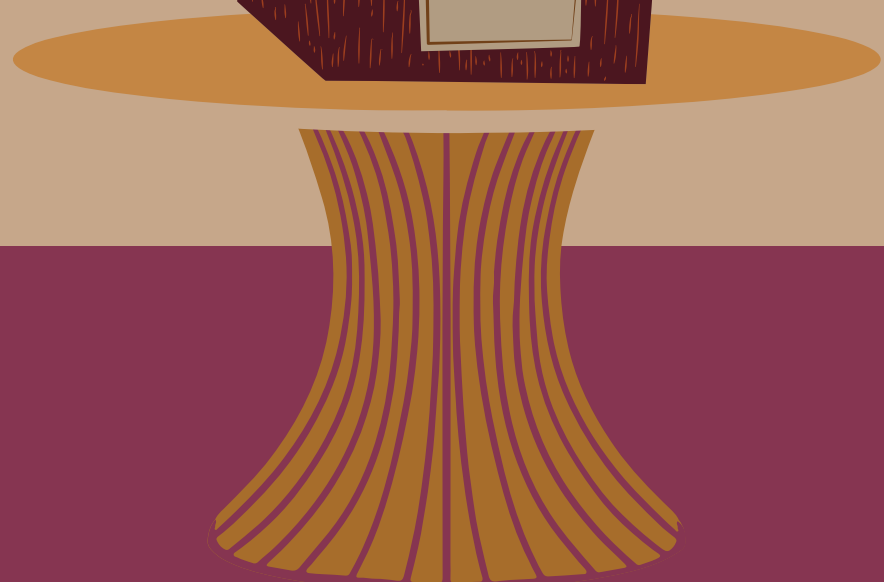


PARISIAN  
CULTURE DATA  
ANALYTICS

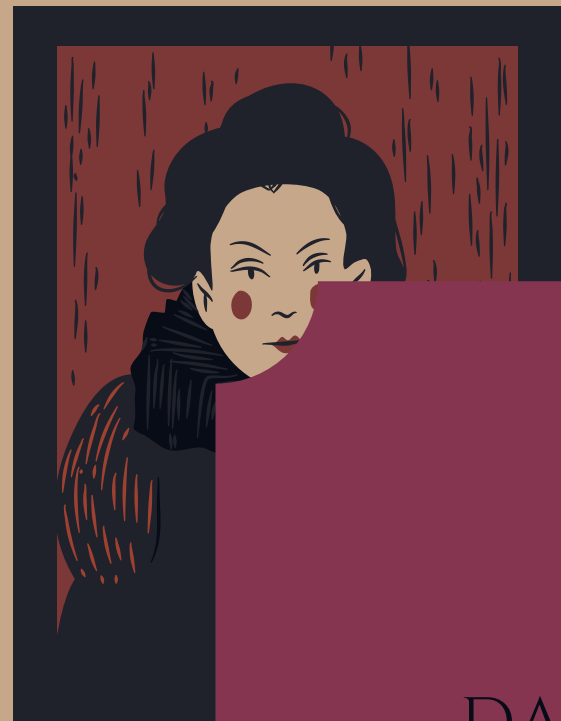
DATAMUSE

Presented by: Sarra & José

# INTRODUCTION TO THE DATA MUSEUM



# FROM DATA TO KNOWLEDGE, INFORMATION IN THE SERVICE OF ART



DATAMUSE, THE SHAZAM FOR  
CULTURAL AND ARTISTIC ACTIVITIES

For whom? For lovers of  
contemporary art, for gallery  
owners and other  
professionals in the sector  
and for travellers who are  
planning a trip to the cradle of  
art

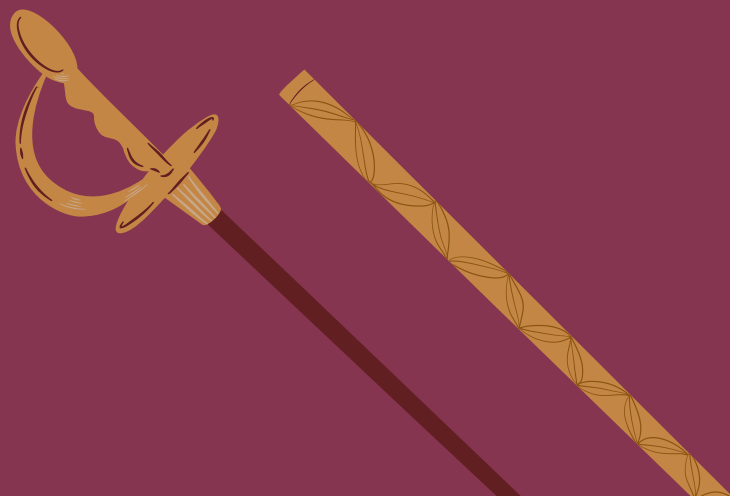


# VISION

- Provide recommendations according to your preferences
- Promote cultural activity in Paris
- Give suggestions to discover art expositions and other interests according to our NLP analysis

# ACTION

- With only one research, get access to every information of related cultural activities in the city of Paris.
- Thanks to our NLP algorithm, we keep track of the best recommendation to your request!





# OUR DATABASE

COMMUNICATION DEPARTMENT OF THE CITY OF PARIS

The database is composed of information from the evolving data set of the City of Paris' participatory agenda.

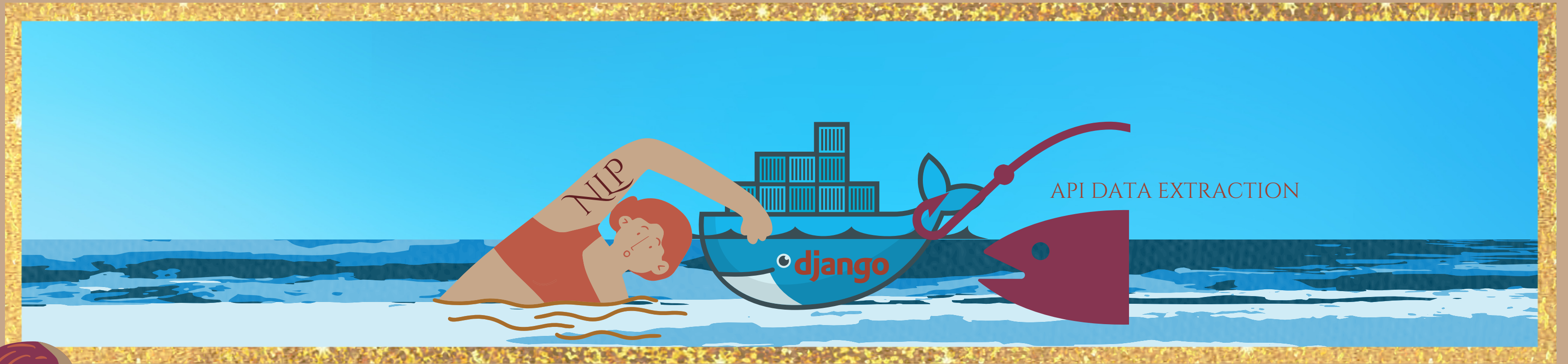
## INFORMATION PROVIDED

The What to do in Paris website identifies places in Paris such as the Libraries and Museums of the City, parks and gardens, entertainment centers, swimming pools, theatres, large places such as the Gaîté Lyrique, concert halls etc...



# MODERN ART - THE MECHANICS

Sarra & José, 2022

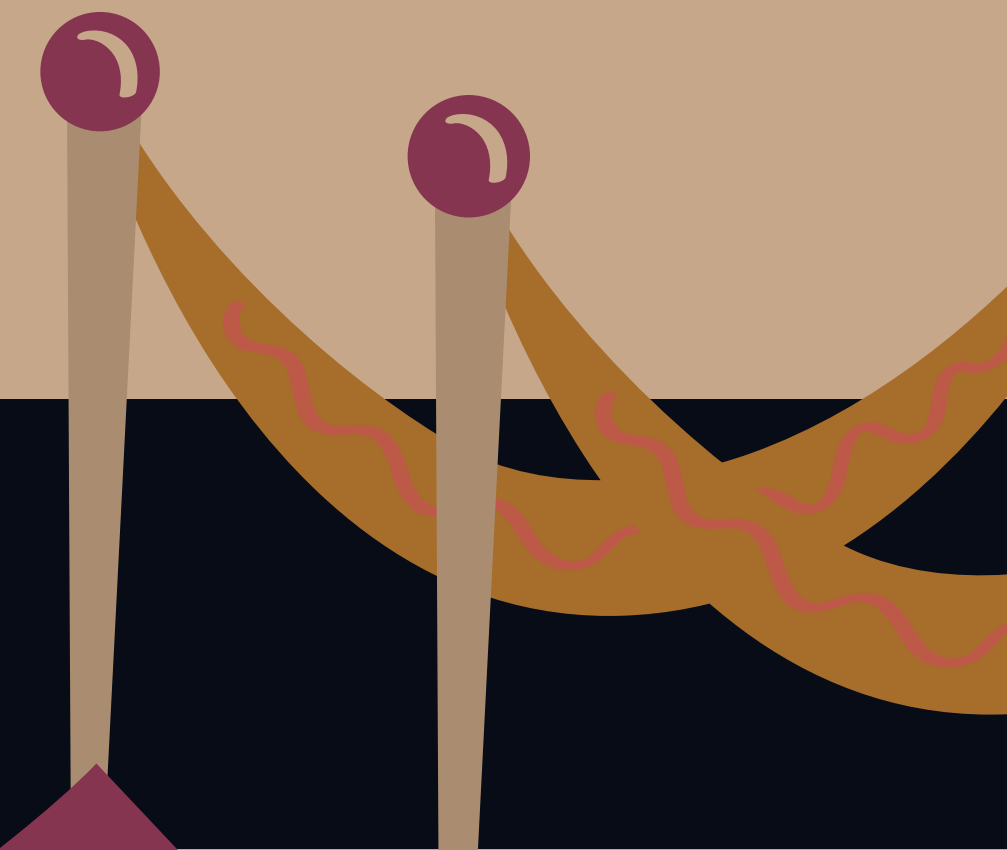


## INTERPRETATION OF THE ARTIST

This piece represents the mechanics of Datamuse. The user's request go through all the computing of our NLP algorithm sideways with the database that is constantly api-extracted so we can keep up with the new updates.

The app is then delivered through django.

Thanks to docker, it is possible to package datamuse. It can be executed on any server !



TO ACCESS OUR PROJECT

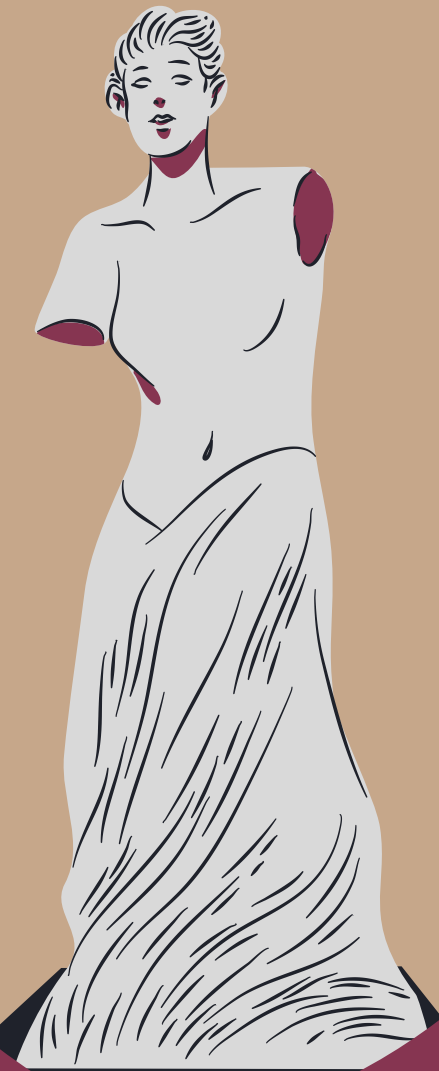




# FOUNDERS OF THE MUSEUM



Sarra Ben Yahia



José Angel Garcia Sanchez