

Installing RACHEL-Pi

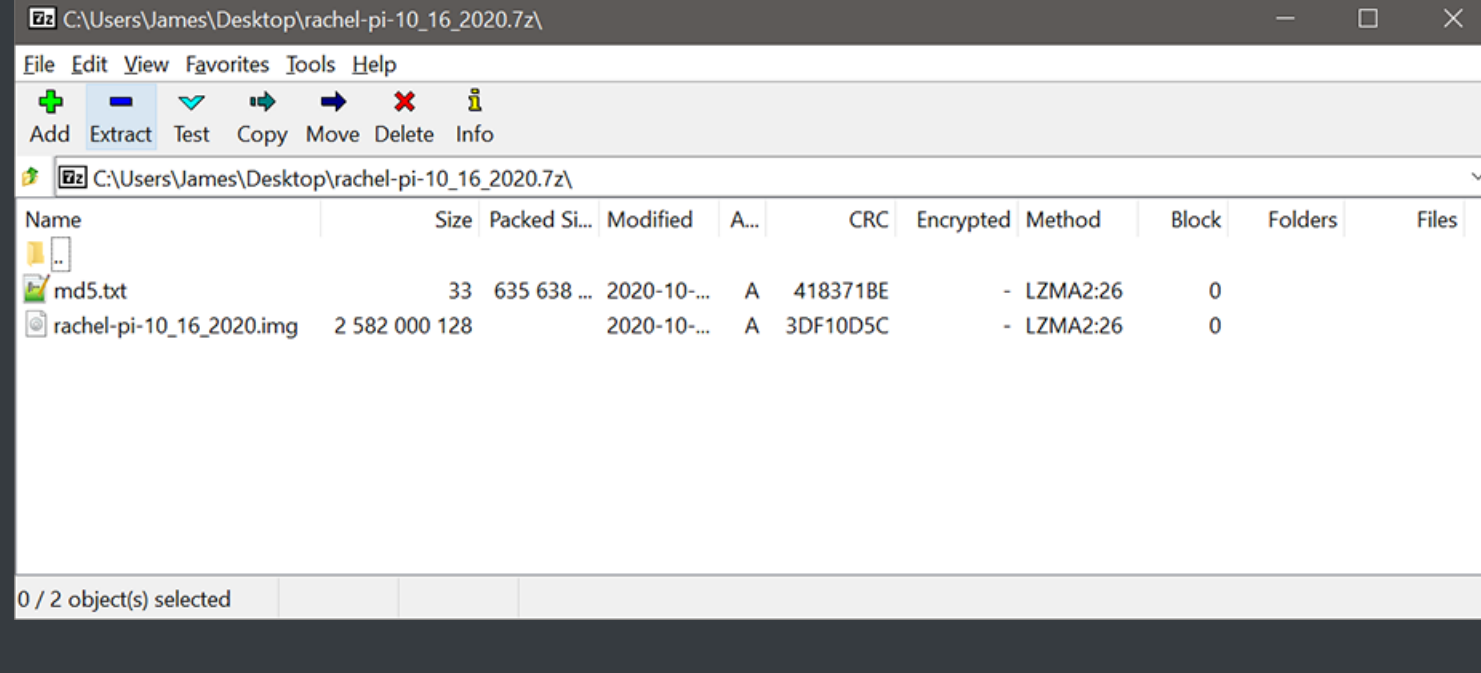
This tutorial will cover installing RACHEL-Pi onto your storage device

Prerequisites

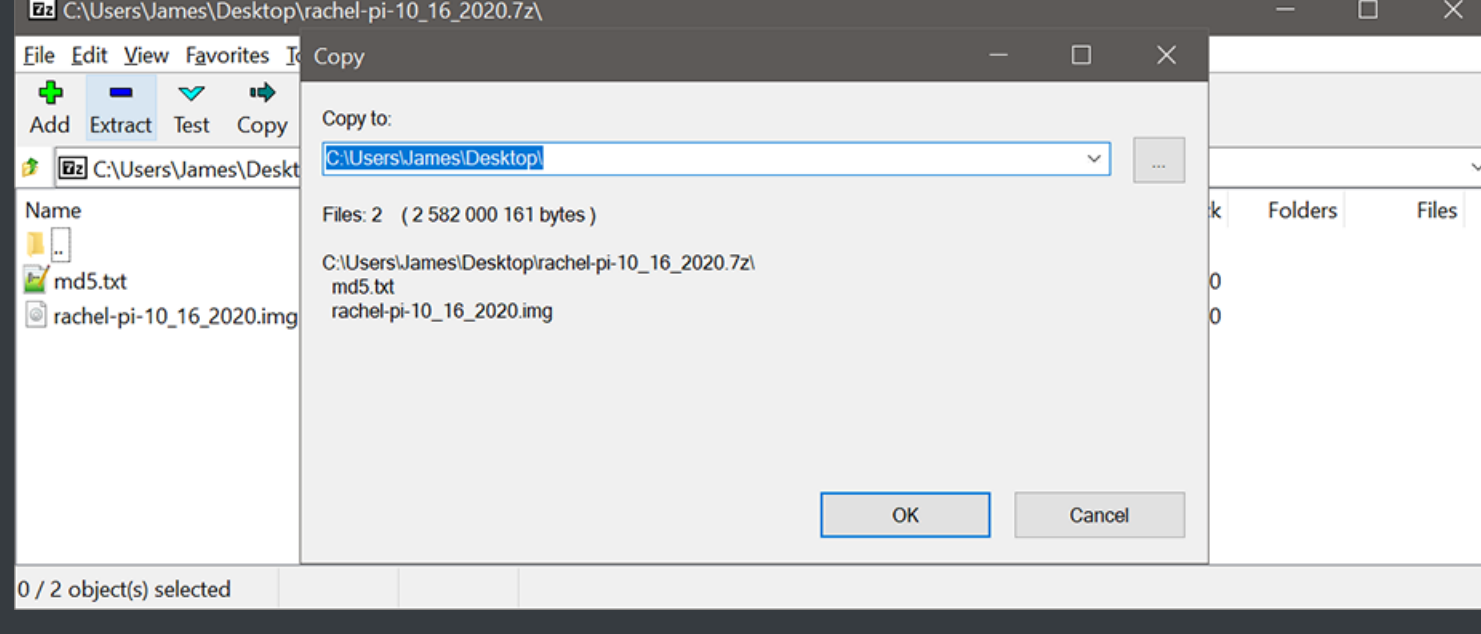
1. A MicroSD or USB storage device
2. Download and install 7-ZIP from www.7-zip.org
3. Download and install Raspberry Pi Imager from www.raspberrypi.org
4. Download a RACHEL-Pi image from the World Possible Forums

Extracting the Image

1. Open the downloaded RACHEL-Pi .7z file with 7-Zip and click the "Extract" button



2. Pick a folder to extract the files to and click the "Ok" button

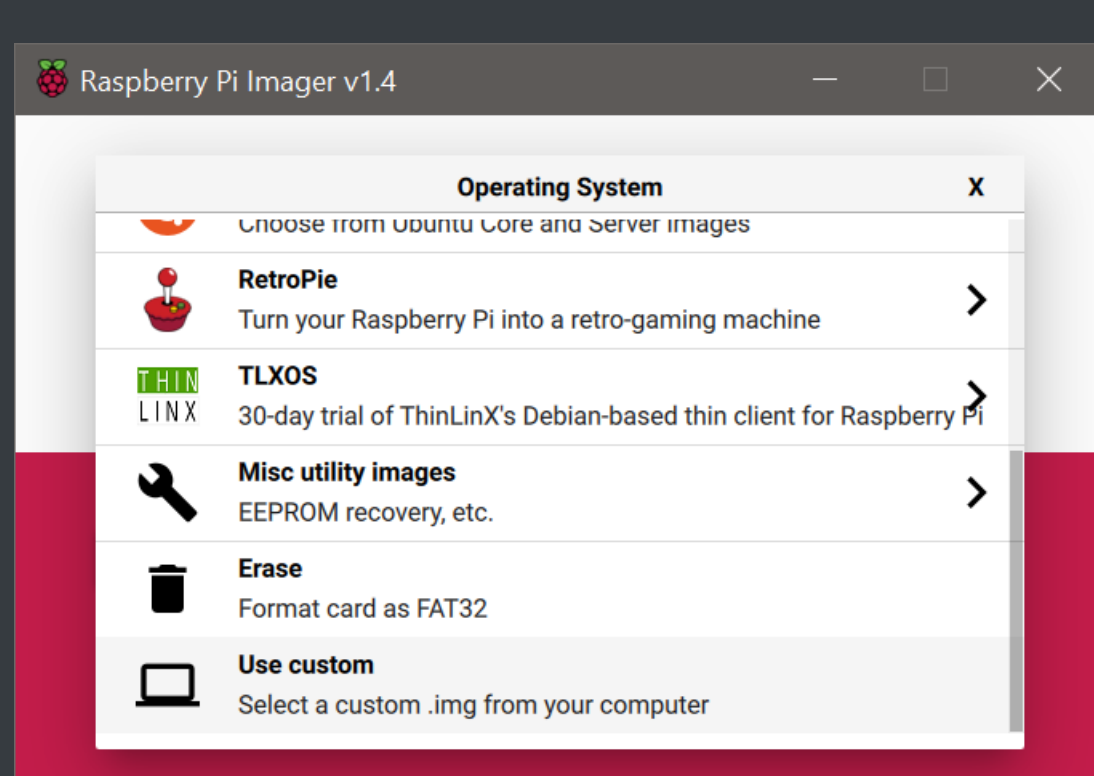


Writing the Image to your Device

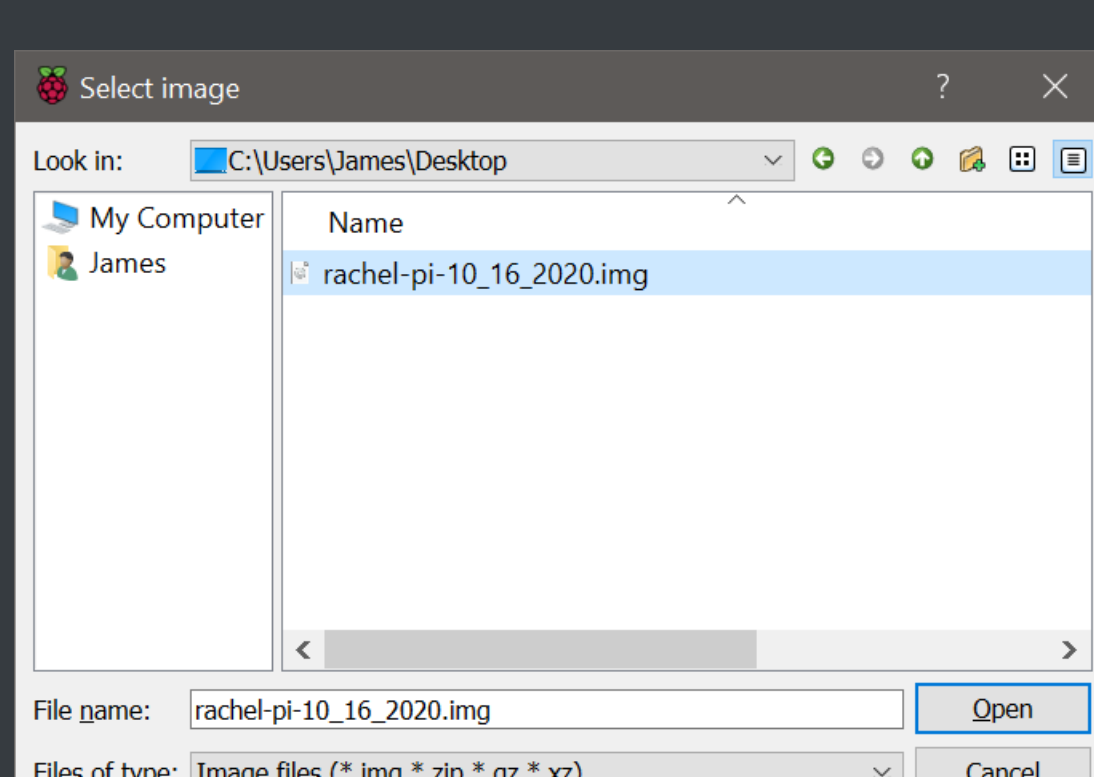
1. Open Raspberry Pi Imager and click the "CHOOSE OS" button



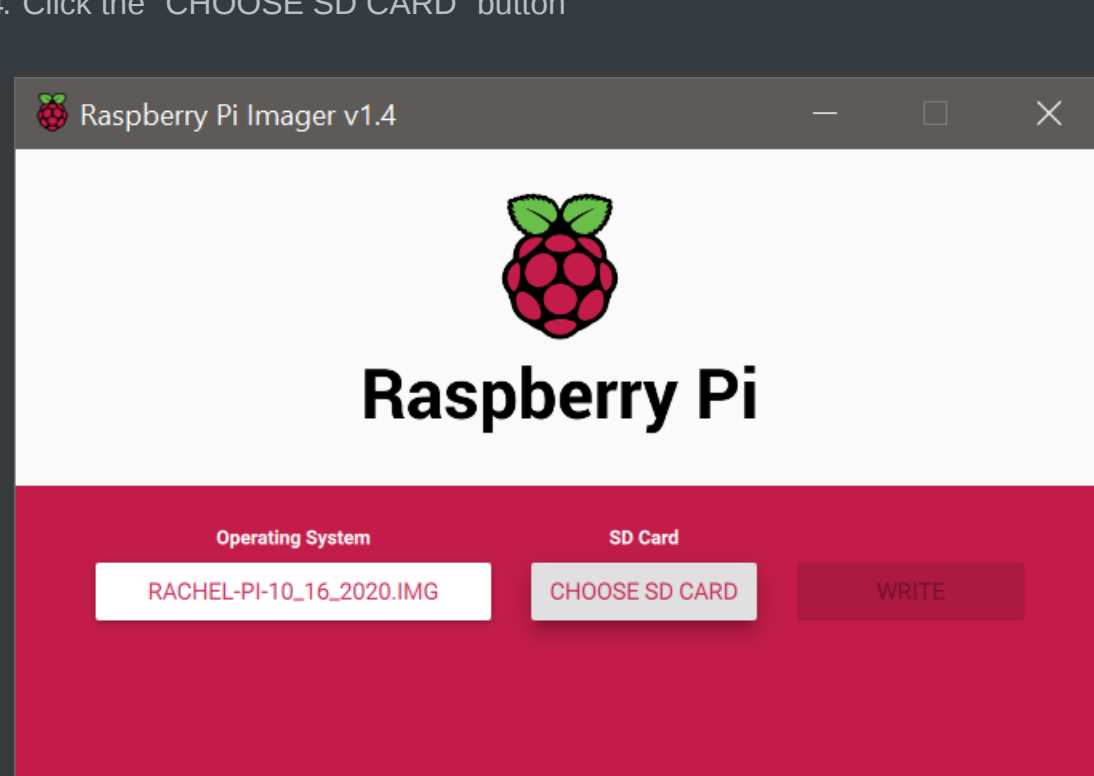
2. When the menu pops up, scroll to the bottom and select "Use Custom"



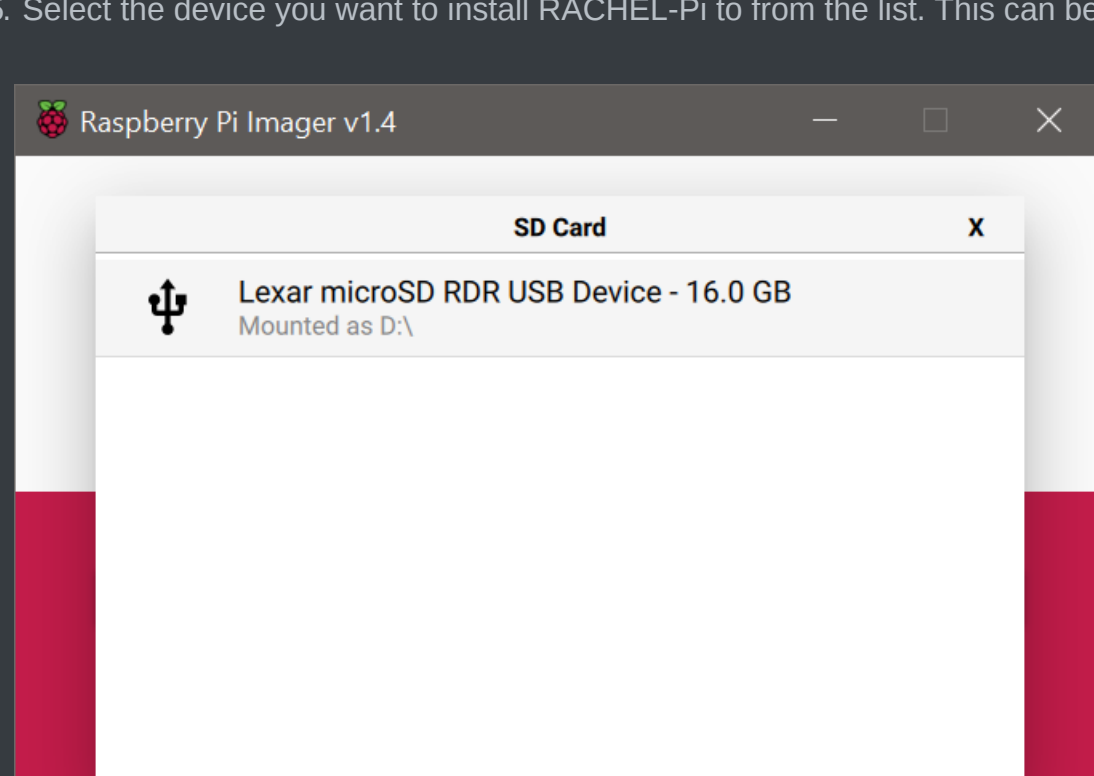
3. Select the image file you just extracted and press the "Open" button



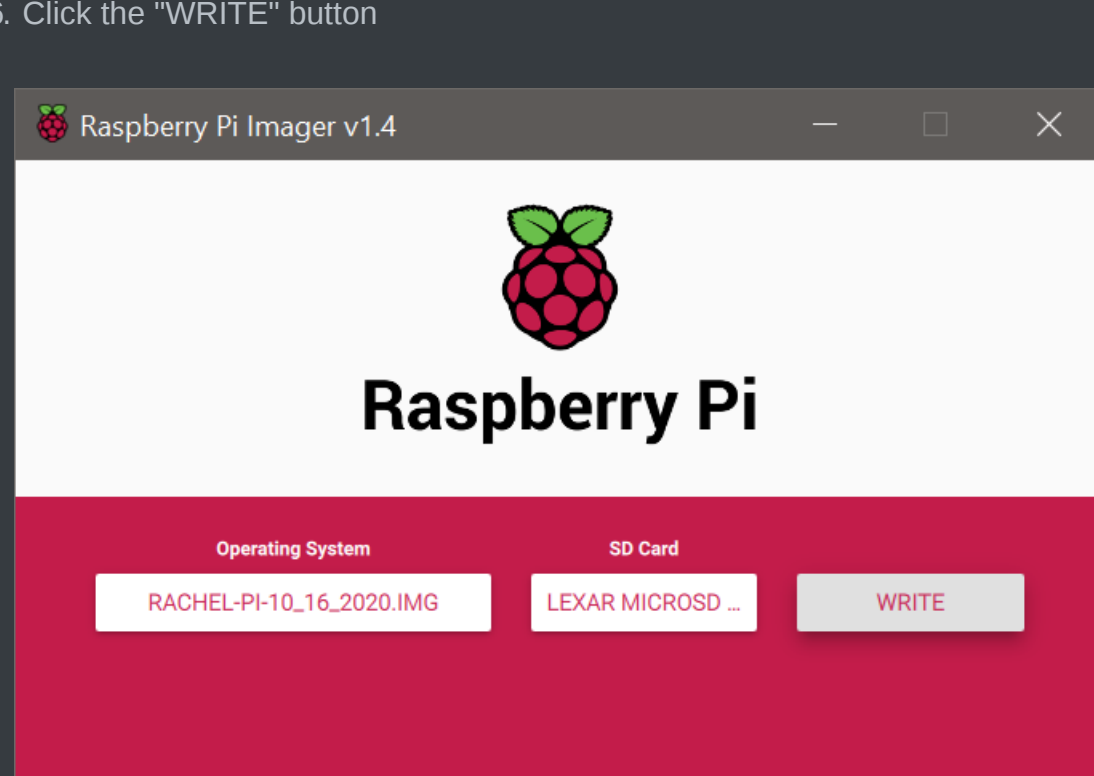
4. Click the "CHOOSE SD CARD" button



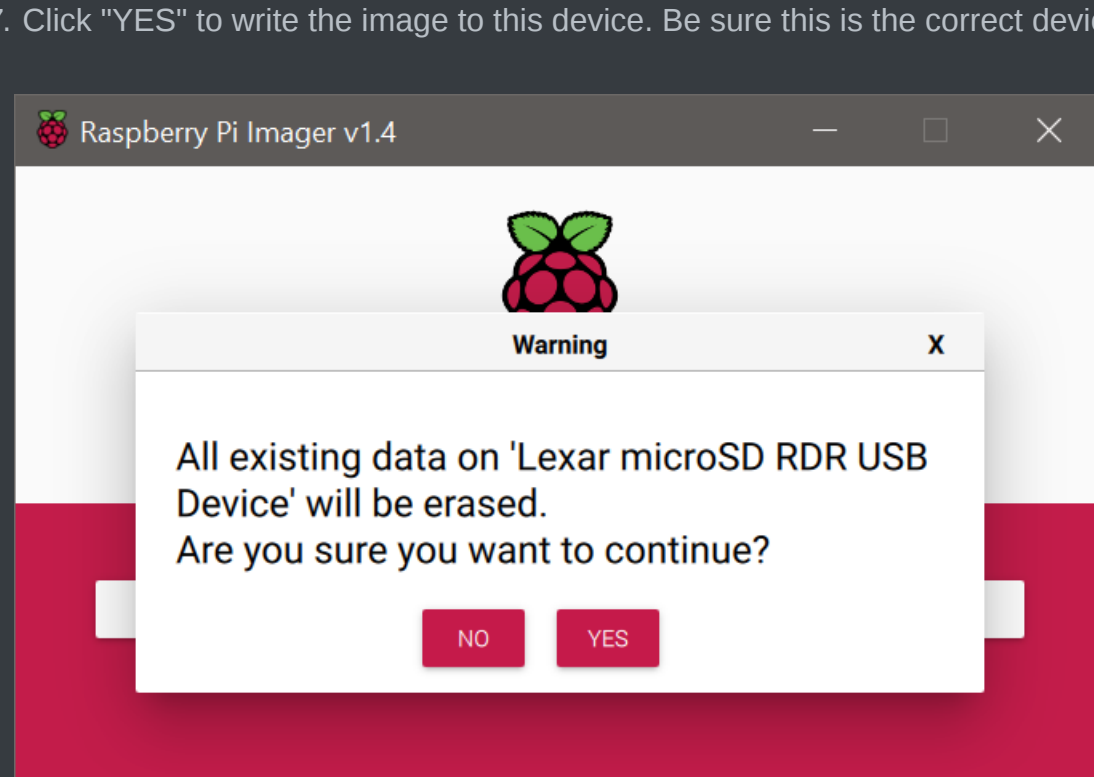
5. Select the device you want to install RACHEL-Pi to from the list. This can be a USB drive or a MicroSD card



6. Click the "WRITE" button



7. Click "YES" to write the image to this device. Be sure this is the correct device as all files on it will be erased



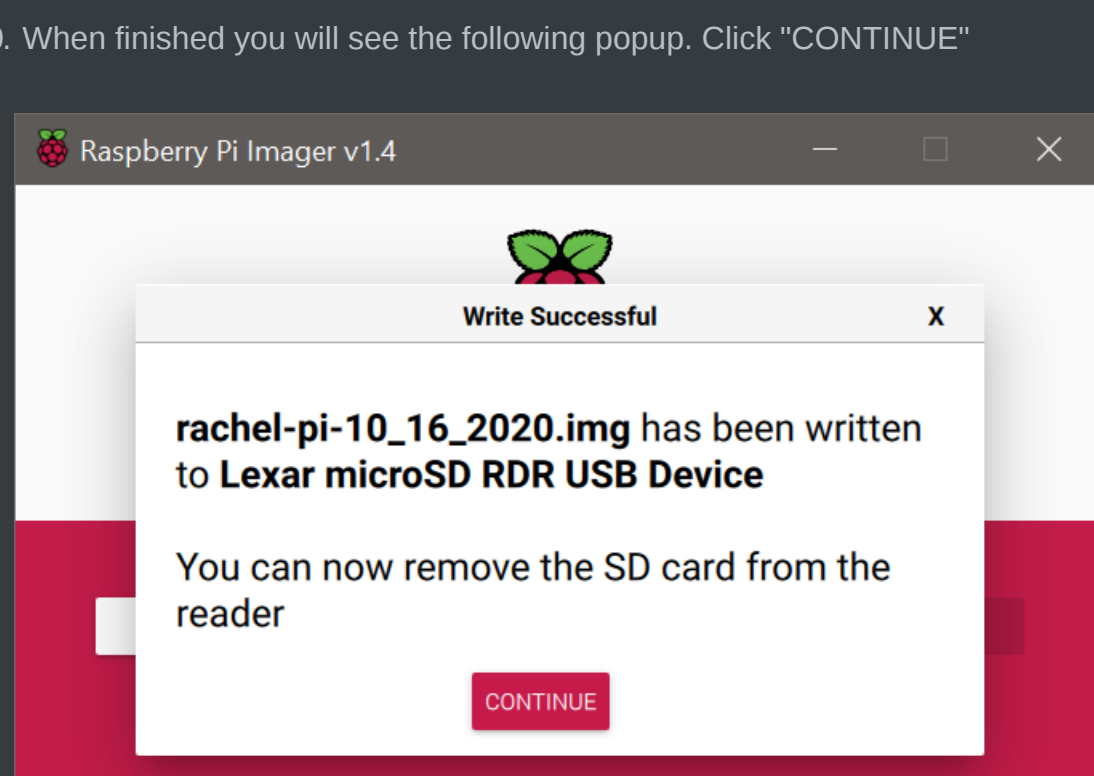
8. The image will now be written to the card. This may take some time depending on your device speed



9. Raspberry Pi Imager will then verify that the image was written properly to your device



10. When finished you will see the following popup. Click "CONTINUE"



11. RACHEL-Pi is now installed and you can place the storage device in your Raspberry Pi